



QUICK START GUIDE

Smart Home Collection

Control4

INTEGRATION SUPPORT



SMART HOME COLLECTION HUB OVERVIEW

Take your Smart Home Collection Hub experience to the next level by integrating motorized shades into CONTROL4 Smart Home control systems. The Smart Home Collection Hub is a rich integration that supports discrete shade control and features a two-way communication system offering real time shade position and battery level status. The Smart Home Collection Hub supports Ethernet Cable (CAT 5) and Wireless Communication (2.4GHz) for home automate integration using the RJ45 port conveniently located on the back of the hub. Each hub can support integration of up to 30 shades.

OVERVIEW:

Control4 Version Required	2.9.0 minimum
Developer	annex4
Initial Release Date	5/28/2019
Last Modified Date	5/28/2019
Support Email	automate@rolleseeacmeda.com

Note: For support of real time updates the annex4 Link driver is required. You can find the driver at: <https://annex4.link/drivers/link>

HARDWARE INSTALLATION:

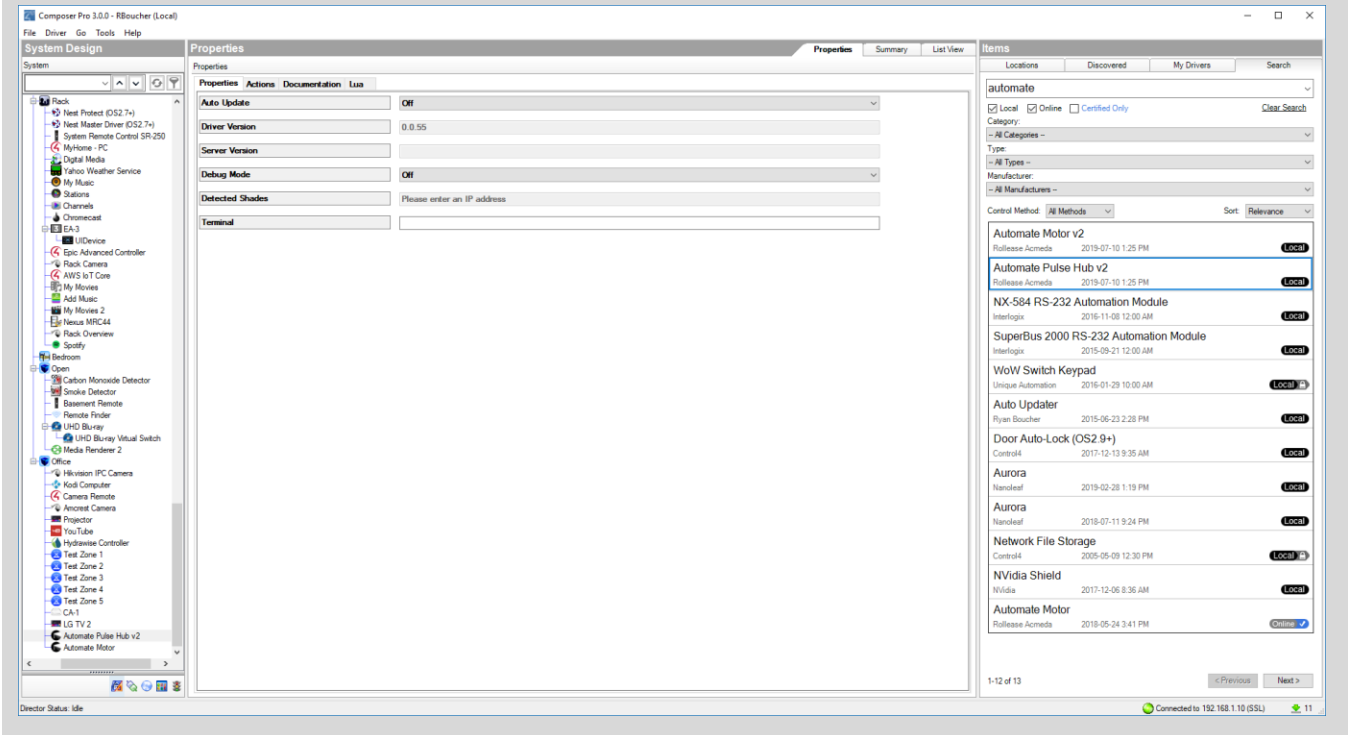
- Install all shades/blinds/motors at desired locations
- Connect the Hub to the Smart Home Collection app
- Connect all shades/blinds/motors to the Smart Home Collection app

DRIVE INSTALLATION:

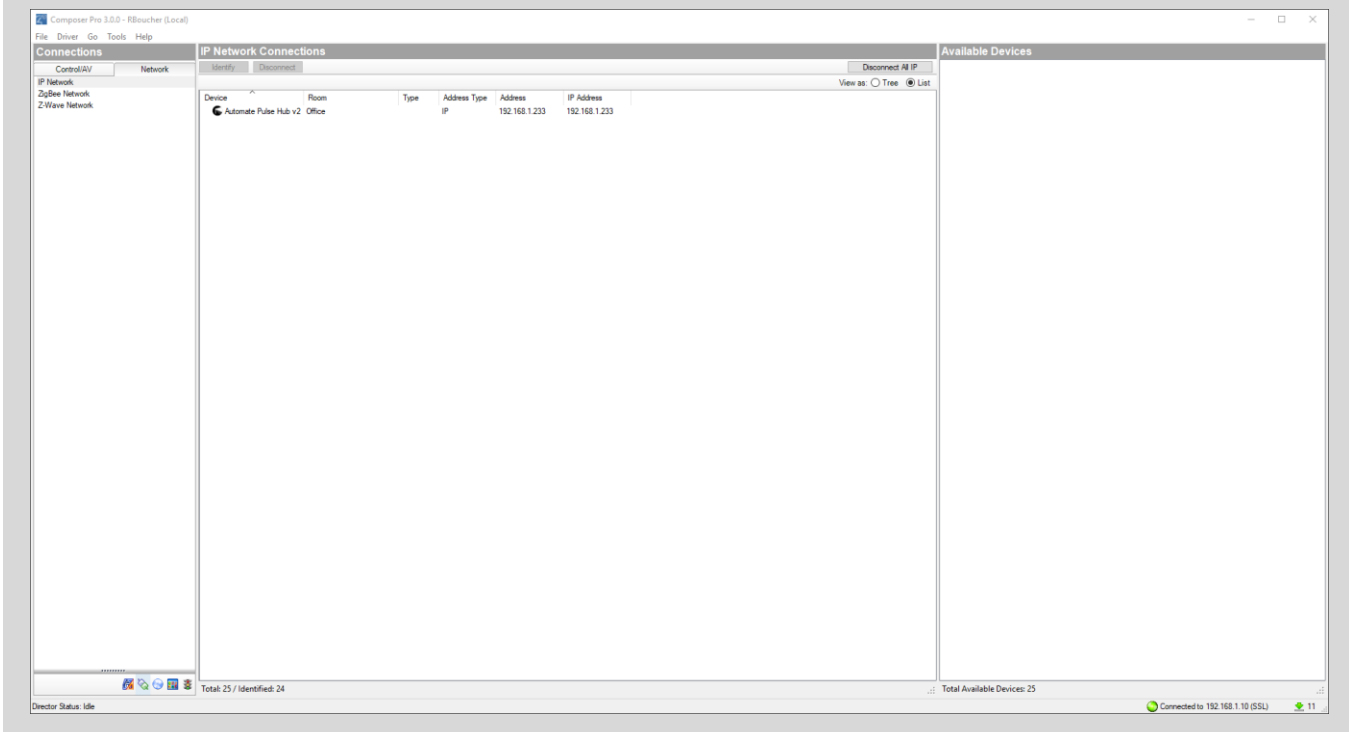
1. Place the "Automate Pulse 2" driver into the project.
2. Navigate to the Connections section and select the Network tab.
3. Enter the IP address of the Smart Home Collection Hub.
4. Confirm that shades have been detected by looking at the Detected Drivers property.
5. For each shade that the "Smart Home Collection Hub" has added to the connections add an "Smart Home Collection Shade" driver to the project.
6. Bind the "Smart Home Collection Shade" drivers to the " Smart Home Collection Hub".
 - a) Once the connection has been bound the driver will automatically populate shade properties.
7. Set the 'Shade Movement Type' to 'Move' or 'Rotate' to determine what the driver should control.
 - a) 'Move' will control basic shade movement.
 - b) 'Rotate' will control the motor rotation.
8. Run the 'Calibrate' action on the shade, this will prepare the driver to calculate the travel times of the shades. By doing this the driver will accurately display ramp rates for a better user experience.
9. Refresh Navigators.

NOTE: Grayed out sections are part of the hub driver installation.

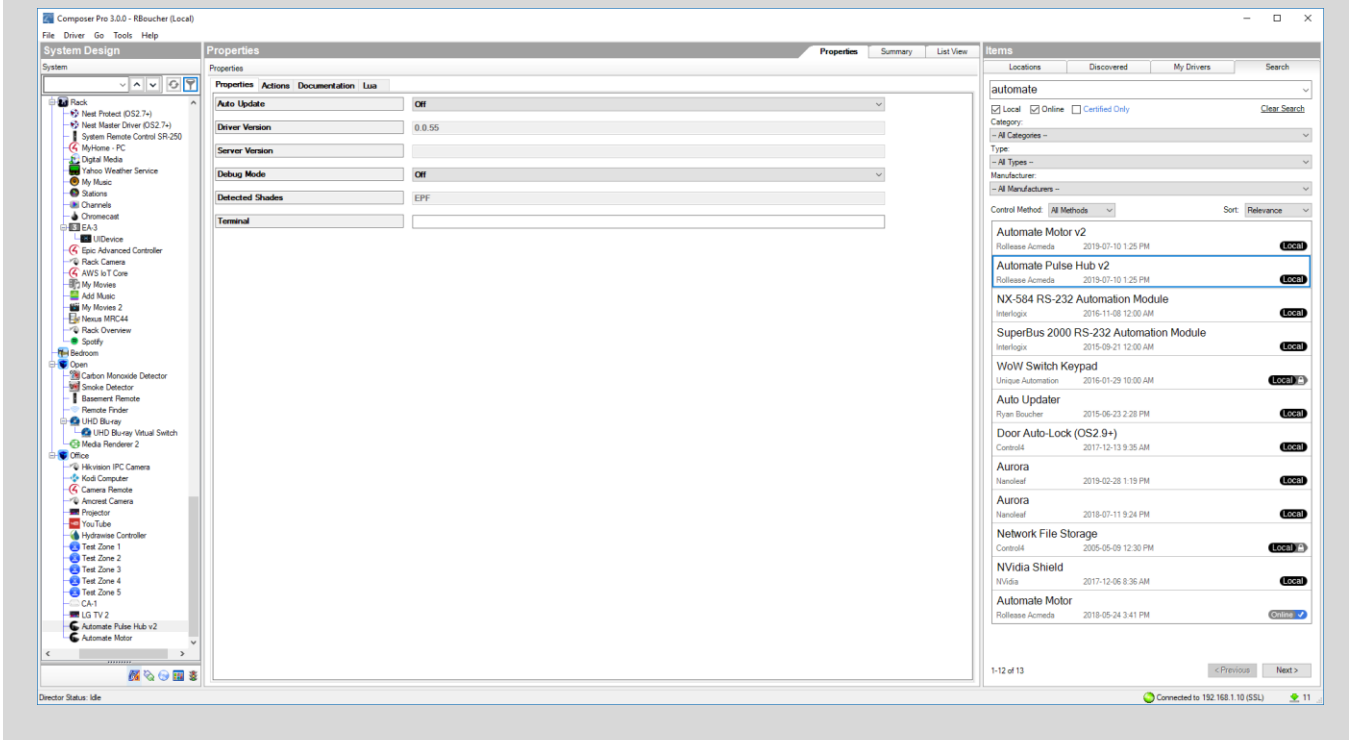
STEP 1: Search the driver via 'Automate Pulse Hub 2' in the right window panel. Double click to add to a room.



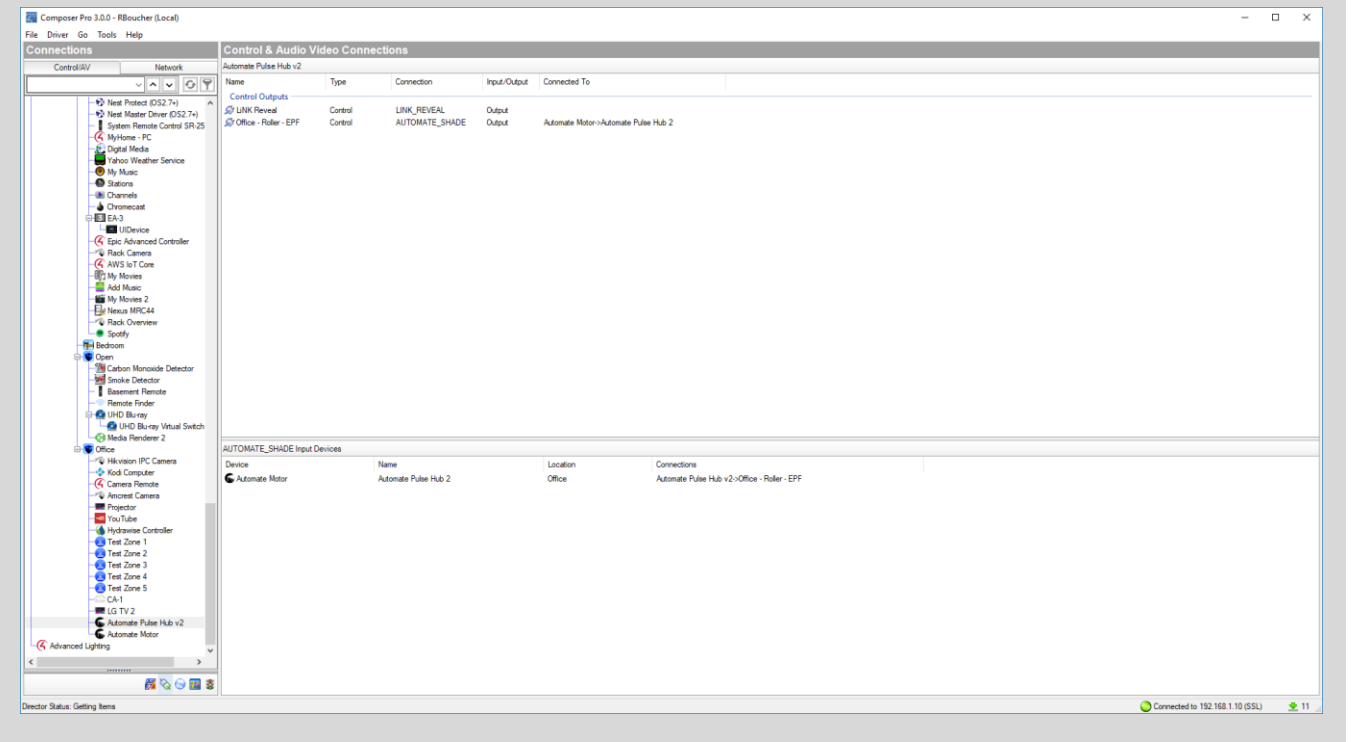
STEP 2: Enter the IP address of the Automate Pulse Hub v2.



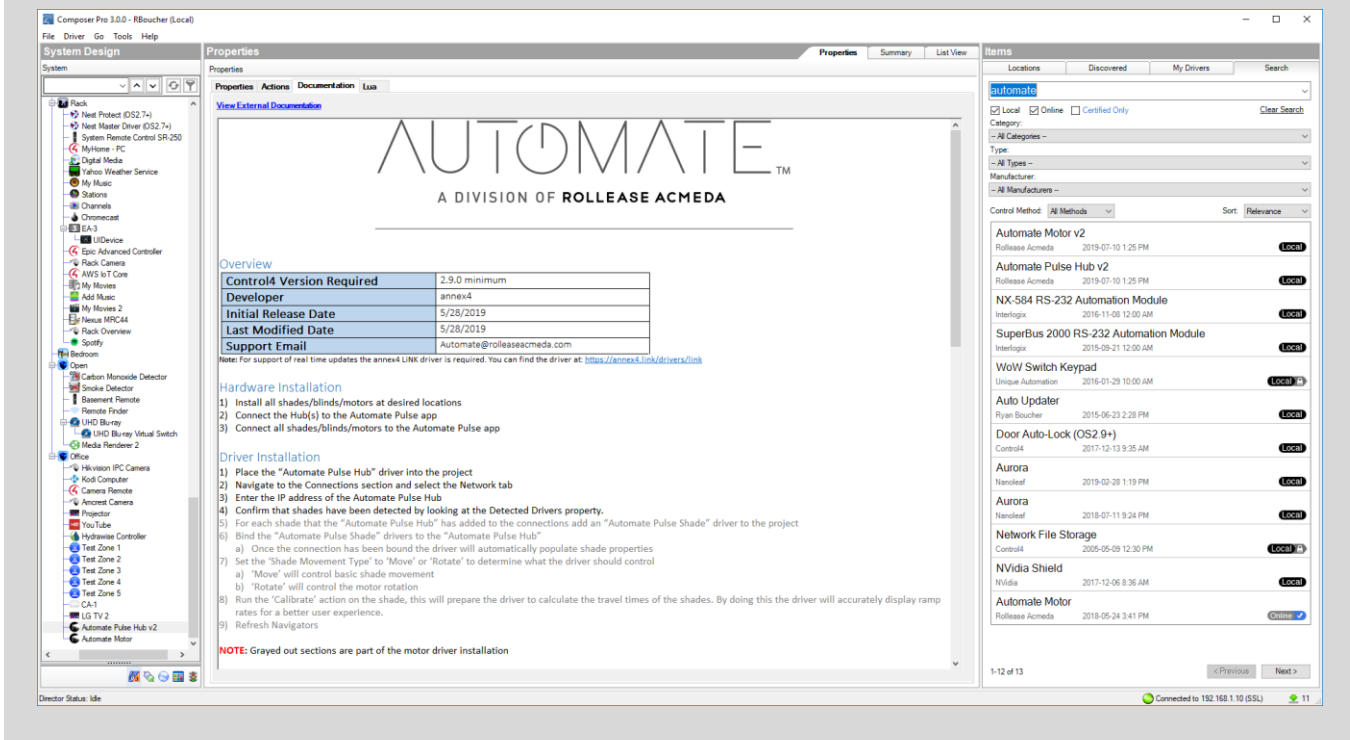
STEP 3: The properties of the driver and discovered shade (5WE).



STEP 4: Connect to the shade (5WE) to an 'Automate Motor' endpoint.



STEP 5: Documentation available on the Composer Pro.



This driver is an Interface Controller for the Rollease Acmeda Smart Home Collection Hub. It allows IP control over Rollease shades from CONTROL4.

DRIVE FOR THE MOTOR:

SUPPORTED FEATURES:

- Drag and drop installation
- Easy calibration of shade travel time
- Control of motor rotation and shade movement

PROPERTIES:

Property	Description
Auto Update	Enables or disables real time updates of the driver from annex4 For support of this property the annex4 Link driver is required
Driver Version	The current version of the driver
Server Version	The server version of the driver For support of this property the annex4 Link driver is required
Debug Mode	Reports information to the log and Lua output window
Modes	
Debug	Reports the data being moved around
Trace	Reports the flow of the driver
Info	Reports basic pieces of information
Warning	Reports any small issues that arise
Error	Reports any large issues that arise
Fatal	Reports issues that cause the driver to fail

Shade Movement Type	'Move' to control shade movement 'Rotate' to control motor rotation
Shade Address	The address of the shade
Shade Type	The motor type operating the shade
Shade Speed	The speed in rotations per minute
Reverse Operation	Reverse the UI level displayed
Open Travel Time	The time it takes for the shade to go from closed to opened in milliseconds
Close Travel Time	The time it takes for the shade to go from opened to closed in milliseconds
Current Motor Level	The current level of the motor, this is the opposite of what is shown in Control4. A motor level of 30 is displayed as 70 in Control4. A motor level of 30 is displayed as 70 in Control4.
Current UI Level	The current level that Control4 is displaying

ACTIONS:

Action Name	Description
Stop	Stops the shade
Jog	Jogs the shade open
Open	Opens the shade
Close	Closes the shade
Calibrate	Create bindings for paired shades on the serial connection
Identify	Moves all other shades to 'Open' and sets this shade to '50' This allows a dealer to quickly identify a shade
Get Shade Info	Forces the driver to retrieve the shade information to update properties
Update Now	Updates the driver to the latest version

CONNECTIONS:

Control Name	Connection Type	Description
Automate Pulse Hub	AUTOMATE_SHADE	The communication binding that lets the shade relay commands to the hub driver
Open Button Link	BUTTON_LINK	Click to open, push to start opening, release to stop
Close Button Link	BUTTON_LINK	Click to close, push to start closing, release to stop
Toggle Button Link	BUTTON_LINK	Click to toggle, push to start the toggle, release to stop
Stop Button Link	BUTTON_LINK	Click to stop

FOR THE HUB:

SUPPORTED FEATURES:

- Simple installation of the hub driver by connecting the network connection;
- Automatically calculates the travel time of the motors accurate to within 50ms;

PROPERTIES:

Property	Description
Auto Update	Enables or disables real time updates of the driver For support of this property the annex4 Link driver is required
Driver Version	The current version of the driver
Server Version	The server version of the driver. For support of this property the annex4 Link driver is required.
Debug Mode	Reports information to the log and Lua output window
Modes	
Debug	Reports the data being moved around
Trace	Reports the flow of the driver
Info	Reports important pieces of information
Warning	Reports any small issues that arise
Error	Reports any large issues that arise
Fatal	Reports issues that cause the driver to fail

Serial Number	The serial number of the hub
MAC Address	The mac address of the hub
Detected Shades	Lists the addresses of all shades discovered on the hub
Terminal	Allows the dealer to manually send commands to the automate hub. Commands should be formatted with a starting "!" and an ending ";" Responses will show in the property shortly after the command is sent

ACTIONS:

Action Name	Description
Retrieve Shades	Create bindings for paired shades on the serial connection
Clear Shades	Clear the bindings created for shades on the serial connection
Close All	Closes all shades
Open All	Opens all shades
Calibrate All	Informs each motor endpoint to calibrate its motor travel times
Update Now	Updates the driver to the latest version

CONNECTIONS:

Control Name	Connection Type	Description
<Room>:<Shade>:<Address>	AUTOMATE_SHADE	The communication binding for a shade endpoint driver
Link Reveal	LINK_REVEAL	This connection is used for annex4's notification and display type devices. By using this binding, you can get notifications on display type devices with minimal programming.

COMMONS MISTAKES:

- Entering the wrong IP address in the "IP Address" configuration line.
 - If you're failing to discover devices double check this!

CONTROL4 SYSTEM CONNECTION:

INTEGRATION TOPOLOGY

The diagram shows an Automate Pulse Hub connected to an RJ45 socket or Wi-Fi. A dotted line indicates the "KIT" area. The hub is connected to an RJ45 plug, which is then connected to an RJ45 socket. The socket is connected to a Control4 system.

CONNECTIONS

The standard connections of the Automate Pulse Hub 2 is Ethernet or Wi-fi. For a LAN connection, you can use a straight Through wiring accordingly indicated below:

RJ45 Pinout T-568A

1. White Green 5. White Blue
2. Green 6. Orange
3. White Orange 7. White Brown
4. Blue 8. Brown

RJ45 Pinout T-568B

1. White Orange 5. White Blue
2. Orange 6. Green
3. White Green 7. White Brown
4. Blue 8. Brown

RJ45 SOCKET

FREQUENTLY ASKED QUESTIONS

Q. No Hub detected.

A. Make sure that your Smart Home Collection Hub is connected to the correct network and get an IP Address available and still communicating with the network using the Smart Home Collection App.

Q. Shade limits are not set properly.

A. Calibrate shade limits with your Rollease Acmeda remote before setting the appropriate open and close time within CONTROL4 SYSTEM.

Q. Shade is not moving at all.

A. Make sure the selected Smart Home Collection Hub is the correct Smart Home Collection Hub for the shade to be controlled. Confirm the correct bindings are set in the CONTROL4 System connections tab between the Smart Home Collection Hub and Shade drivers.

Q. I have multiple Hub's, what do I do?

A. Load two Smart Home Collection Hub drivers. After selecting "Retrieve Hubs" located in the driver actions tab, you will see different Smart Home Collection Hub - select the desired one.

Q. I don't see any shade bindings in the Hub driver?

A. Select "Retrieve Shades" located in the driver actions tab.

Q. How do I scan for available Hub's?

A. Once the Smart Home Collection Hub is properly connected via the Ethernet cable or Wireless network, navigate to the Smart Home Collection Hub Properties page within Composer. Select "Retrieve Hubs" located in the driver actions tab.

Q. We get unexpected responses from the CONTROL4 system, or "?" symbols

A. Ensure that all connections using the ethernet port or Wi-Fi are working properly. The missed connection has been known to yield unwanted or unexpected results.

SUPPORT RESOURCES:

For further assistance, contact your retailer, visit our website at www.budgetblinds.com.