

QUICK START GUIDE

Smart Home Collection

Elan

INTEGRATION SUPPORT



SMART HOME COLLECTION HUB OVERVIEW

Take your Smart Home Collection Hub experience to the next level by integrating motorized shades into ELAN Smart Home control systems. The Smart Home Collection Hub is a rich integration that supports discrete shade control and features a two-way communication system offering real time shade position and battery level status. The Smart Home Collection Hub supports Ethernet Cable (CAT 5) and Wireless Communication 2.4GHz for home automate integration using the RJ45 port conveniently located on the back of the hub. Each hub can support integration of up to 30 shades.

OVERVIEW:

Manufacturer:	Rollease Acmeda
Model Number(s):	Automate Pulse 2
Core Module Version:	8.3
Driver Developer:	annex4
Document Revision Date:	05/30/2019

OVERVIEW & SUPPORTED FEATURES

This driver is a Lighting Interface Controller for the Rollease Acmeda Automate Pulse Hub 2. It allows IP control over Rollease shades from ELAN.

THE FOLLOWING OPTIONS ARE SUPPORTED BY THIS DRIVER:

- Dimmer, Shade, and Louvre lighting devices.
- Realtime feedback of shade positions updated to ELAN Core.
- Open, and Ramp Up commands.
- Close, and Ramp Down commands.
- Stop to halt the movement of rotation or positioning.
- Rotation accurate to 1.8% increments.
- Position accurate to 1% increments.

Any feature not specifically noted as supported should be assumed to be unsupported.

SMART HOME COLLECTION HUB CONFIGURATION

The hub will need to be installed and configured with the SHC application. All shades should be configured with the SHC application before starting the installation of the ELAN driver. Please refer to the SHC application for step by step instructions on how to add shades to your hub.

CONFIGURATION

As with all third-party drivers these do not reside in the typical listing of drivers from ELAN. To add this driver to an ELAN system:

1. Download the .EDRVC file associated with this document if you do not already have it.
2. Place the .EDRVC file in a location on your computer.
 - a. We recommend \User\\Documents\Elan\Drivers.
3. In the g! Configurator navigate to the Lighting Interfaces item under Lighting.

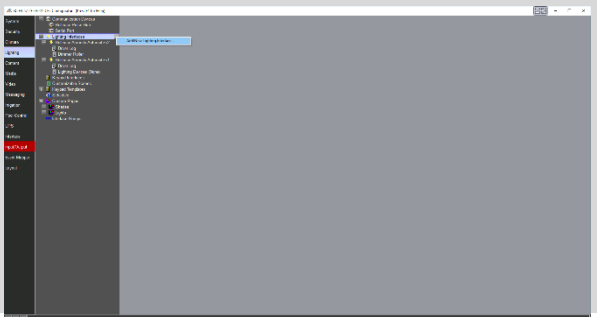
4. Navigate to the location you saved the .EDRVC file to and select it.
5. Select "Rollease Acmeda Automate v2" from the list and click "OK".
6. A prompt will appear saying there will be no support from ELAN, click "OK".
7. The driver should now be visible under the Lighting Interfaces header.

INSTALLATION PROCESS

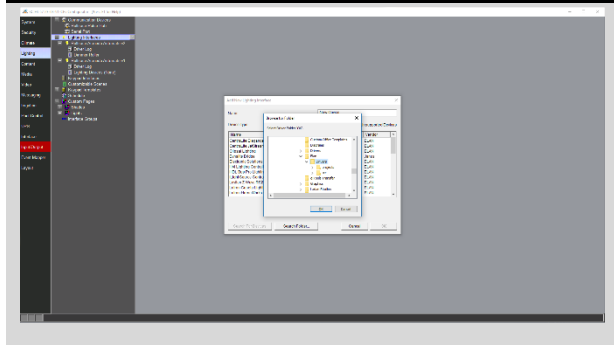
It is recommended that you follow the below installation process in order to proper functionality with the driver.

1. Select the Interface Type you want to use in Elan to control the shades.
 - a. You can do this by setting the configuration option "Interface Type" to "Dimmer", "Shade", or "Both".
2. Enter the IP address of the Automate Pulse Hub 2 in the "IP Address" field.
3. Click "Discover Devices" at the bottom of the lighting interface window.
 - a. Please wait a few seconds for the driver to find all the shades on the hub.
4. At this point your shades should be created under the lighting interface.
5. [Optional] If you want to control the rotation of the shade you can add a Louvre device
 - a. Select Lighting Devices (None) or any of the shades that have been created.
 - b. Select "Add New Device".
 - c. Select "Louvre Tilt".
 - d. Enter the Address of the shade in the "Shade Address" configuration line of the new device.
 - e. Enter "LOUVRE" (without quotes) into the Device Type field.
6. Bind the devices to user interface components in the custom pages.

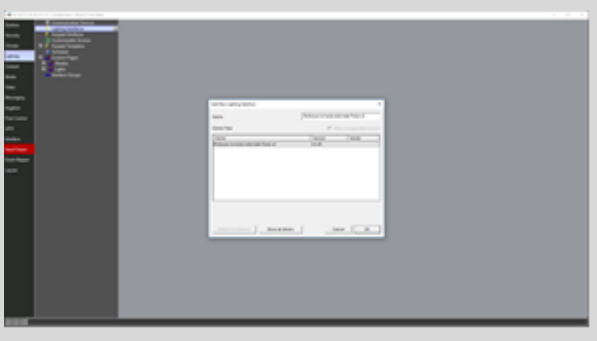
STEP 1



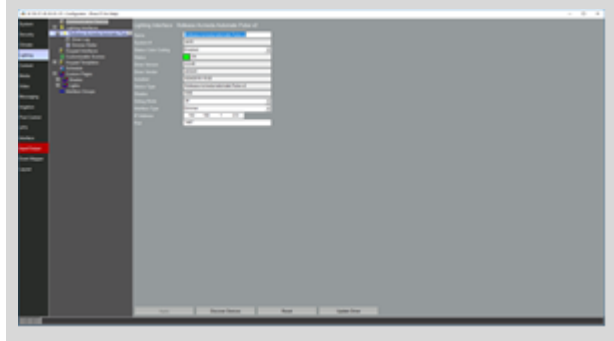
STEP 2



STEP 3

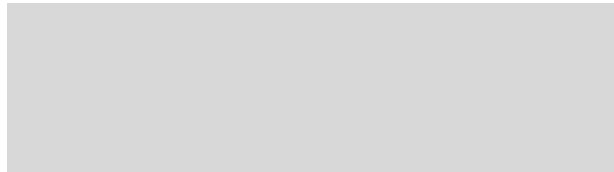
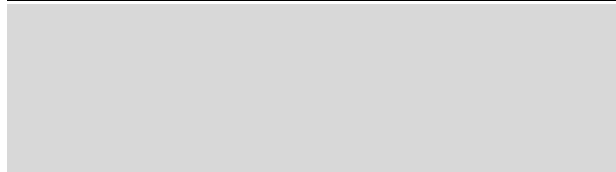


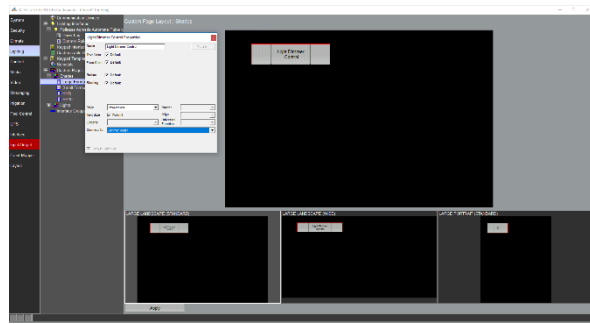
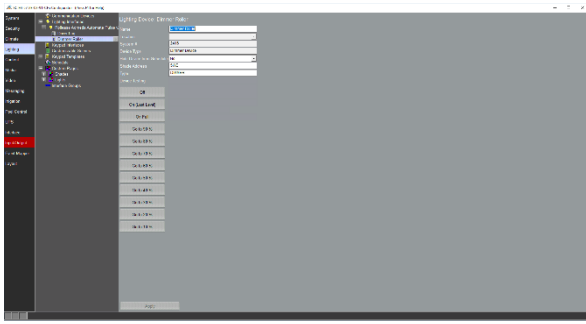
STEP 4



STEP 5

STEP 6





CONFIGURATION DETAILS

The following table provides settings used in Configurator. In the table below:

- “<User Defined>”, etc. Type in the desired name for the item.
- “<Auto Detect>”, etc. The system will auto detect this variable.
- “<System>”, etc. The setting has been automatically set by the system.
- “<Select>” A dropdown with a list of options.

Devices	Variable Name	Setting	Comments
Lighting Interface	Name	<User Defined>	Default “Rollease Acmeda Automate v2”
	System #	<System>	Defined by the system to identify the device
	Status Color Coding	<Select>	Enabled or Disabled
	Status	<System>	The state of the driver, where green is good and red means there was an installation problem.
	Driver Version	<System>	The version of the driver
	Driver Vendor	<System>	Annex4
	Installed	<System>	The date and time the driver was installed
	Device Type	<System>	The label identifying what type of device the driver is
	Shades	<System>	The listing of shades discovered by the driver
	Debug Mode	<Select>	Select the verbosity of the entries that should appear in the Driver Log
	Interface Type	<Select>	Select the type of devices that will be created when discovery occurs
	IP Address	<User Defined>	The IP address of the Pulse Hub 2
	Port	<User	Defaults to 1487, this should not be changed unless the Hub

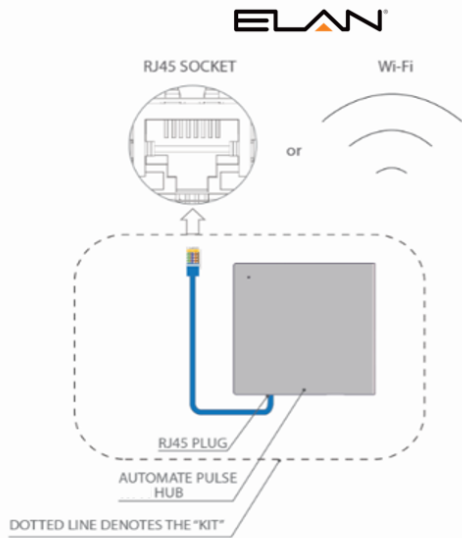
		Defined>	itself has changed its IP address
Light Device	Name	<User Defined>	The name of the device
	Location	<Select>	The location of the device in the project
	System #	<System>	Defined by the system to identify the device
	Device Type	<System>	The type of device
	Hide Device from Scheduler	<Select>	
	Shade Address	<User Defined>	The address of the shade to control
	Type	<User Defined>	SHADE, DIMMER, or LOUVER.

COMMON MISTAKES

- Entering the wrong IP address in the "IP Address" configuration line.
 - If you're failing to discover devices double check this!

ELAN CONTROL SYSTEM CONNECTION:

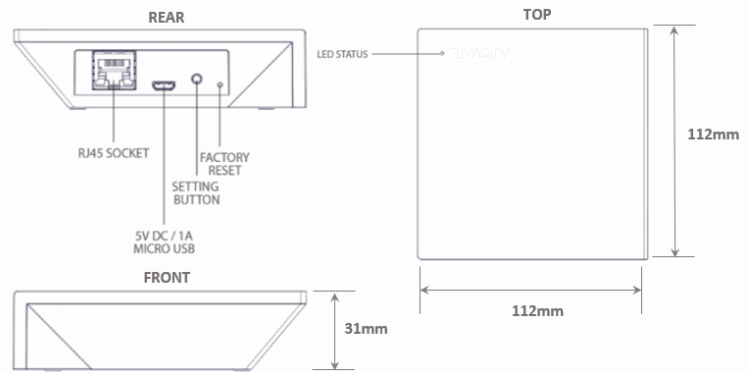
INTEGRATION TOPOLOGY



ADDITIONAL INFORMATION:

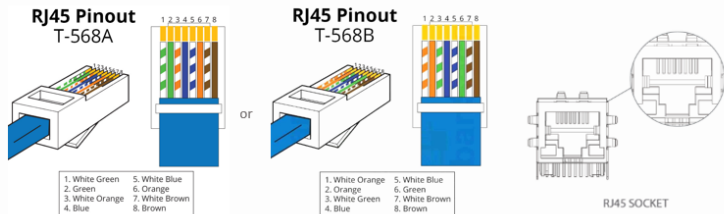
- The CAT 5 cable should be no longer than 100 meters (328ft).
- Router, switch or access point are required to connect the Hub via LAN connection;
- Wi-fi repeater is required depending on the cover of the Wi-fi Router signal.
- The AUTOMATE PULSE HUB 2 works only with Wi-fi in 2.4Ghz (not 5Ghz)

AUTOMATE PULSE HUB 2



CONNECTIONS

The standard connections of the Automate Pulse Hub 2 is Ethernet or Wi-fi. For a LAN connection, you can use a straight Through wiring accordingly indicated below:



FREQUENTLY ASKED QUESTIONS:

Q. No Pulse Hub 2 detected.

A. Make sure that your Automate Pulse 2 is assigned to the correct network and get an IP Address available and still communicating with the network using the Automate Pulse App 2.

Q. Shade limits are not set properly.

A. Calibrate shade limits with your Rollease Acmeda remote before setting the appropriate open and close time within ELAN SYSTEM.

Q. Shade is not moving at all.

A. Make sure the selected Pulse Hub 2 is the correct Pulse Hub 2 for the shade to be controlled. Confirm the correct bindings are set in the ELAN System connections tab between the Pulse Hub 2 and Shade drivers.

Q. I have multiple Pulse Hub's 2, what do I do?

A. Load two Automate Pulse Hub 2 drivers. After selecting "Retrieve Hubs" located in the driver actions tab, you will see different Automate Pulse Hubs 2 - select the desired one.

Q. I don't see any shade bindings in the Pulse Hub 2 driver?

A. Select "Retrieve Shades" located in the driver actions tab.

Q. How do I scan for available Automate Pulse Hub's 2?

A. Once the Automate Pulse Hub 2 is properly connected via the Ethernet cable or Wireless network, navigate to the Automate Pulse Hub 2 Properties page within Composer. Select "Retrieve Hubs" located in the driver actions tab.

Q. We get unexpected responses from the ELAN system, or "?" symbols

A. Ensure that all connections using the ethernet port or Wi-Fi are working properly. The missed connection has been known to yield unwanted or unexpected results.

SUPPORT RESOURCES:

For further assistance, contact your retailer, visit our website at www.rolleseeacmeda.com.