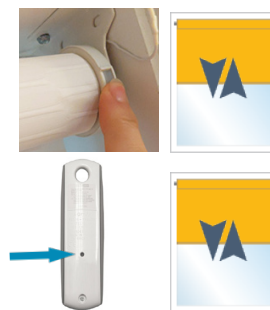


Roll-Up 28 Wirefree™ RTS Quick Programming Guide

BEFORE YOU BEGIN: Check if you have a paired remote with the following directions:

- 1) **Supply power to the motor by connecting the power source to the power cable on the motor.**
- 2) If a remote was ordered, press a directional button (UP or DOWN) and see if the shade operates. If a multi-channel remote was ordered, select the channel the shade should be programmed under then operate the shade.
 - a) If the shade operates - the shade is already programmed.
 - b) If the shade does not operate - choose the channel on which you would like to control the shade. **PRESS & HOLD** the **PROGRAMMING BUTTON** on the motor until it jogs once. Then **BRIEFLY PRESS** the **PROGRAMMING BUTTON** on the remote. The shade will jog once. The shade is now programmed.

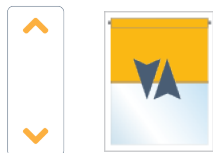


NOTE: Upper and lower limits are set at the factory. In the event limit setting is required, please follow steps under Initial Programming and Limit Setting.

INITIAL PROGRAMMING AND LIMIT SETTING

NOTE: Motor will exit programming mode after 2 minutes of inactivity. While in **programming mode**, the shade only operates when UP or DOWN buttons are continuously pressed.

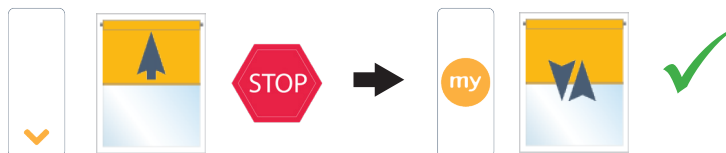
Step 1: To initiate programming **PRESS & HOLD** the **UP and DOWN** buttons at the same time until the shade jogs.



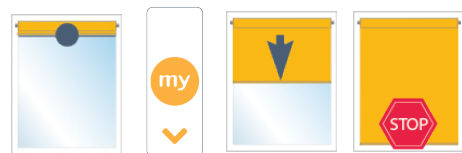
Step 2: Check the direction of operation. Press the **DOWN** button and confirm the shade lowers.



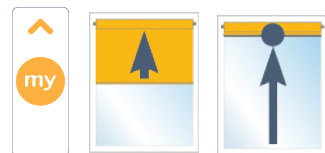
If the shade raises instead of closing, change the direction - **PRESS & HOLD** the **MY/STOP** button until the shade jogs. Confirm correct direction of operation before proceeding.



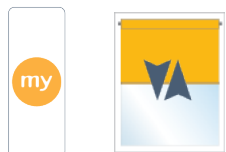
Step 3: Bring the shade to your desired upper limit. **PRESS & HOLD** both the **MY/STOP** and **DOWN** buttons until the shade begins to move down, then release. Stop the shade at the desired lower limit, adjust by pressing the **UP** or **DOWN**.



Step 4: **PRESS & HOLD** the **UP** and **MY/STOP** buttons until the shade begins to move up. The shade will stop at the original upper limit. Adjust if necessary.



Step 5: **PRESS & HOLD** the **MY/STOP** button until the shade jogs to confirm both limit settings.



Step 6: To finalize **BRIEFLY PRESS** the **PROGRAMMING BUTTON** on the back of the control. The shade will jog and will now operate in **user mode**. A brief press of the UP or DOWN button will send the shade to the respective limit.



ADJUSTING THE LIMITS IN USER MODE

UPPER LIMIT

LOWER LIMIT

Step 1: Move the shade to the current limit position you wish to adjust and let it stop.



Step 2: **PRESS & HOLD** both **UP** and **DOWN** buttons simultaneously until the shade jogs, then release.



Step 3: Adjust to a new limit position using the **UP** or **DOWN** buttons.



Step 4: **PRESS & HOLD** the **MY/STOP** button until the shade jogs, then release. Check the new limit.



ADD OR DELETE A CONTROL

a) **PRESS & HOLD** the **PROGRAMMING BUTTON** on the back of Control 1 until the shade jogs.



CONTROL 1:
Previously programmed control - single channel or the channel (1-5) of a multi-channel remote.

b) **BRIEFLY PRESS** the **PROGRAMMING BUTTON** on the back of Control 2. The shade jogs.



CONTROL 2:
Second control to be added or deleted - single channel or the channel (1-5) of a multi-channel remote.

The procedure to delete an RTS sensor is the same.

ENABLING SLEEP MODE

The shade must be programmed.

This feature temporarily prevents the motor from responding to any previously programmed remote commands.

1) **PRESS & HOLD** the motor head **PROGRAMMING BUTTON** until the shade jogs.



2) **BRIEFLY PRESS** the motor head **PROGRAMMING BUTTON**, the shade jogs twice. Sleep Mode is activated.



DISABLING SLEEP MODE

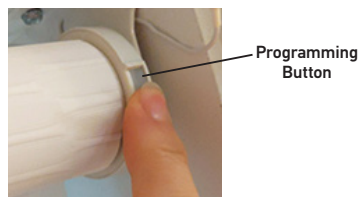
3) Press the motor head **PROGRAMMING BUTTON**. The shade jogs and the remote commands are enabled.



NOTE: If step 3 is not performed, Sleep Mode will automatically disable after approximately 10 minutes.

RESETTING THE MOTOR TO FACTORY MODE

PRESS & HOLD the **PROGRAMMING BUTTON** on the motor (shown below) for approximately 12 seconds during which the shade will jog 3 separate times.



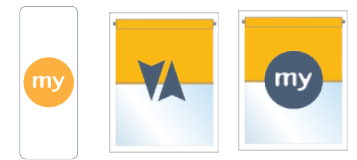
All programmed remotes and limit settings will be erased. Motor is now reset to **factory mode**. Motor limits will need to be re-established.

SETTING INTERMEDIATE "MY" POSITION

1) Move the shade to the desired position and press **MY/STOP** button to stop the shade.



2) **PRESS & HOLD** the **MY/STOP** button until the shade jogs. The "my" favorite position is set.

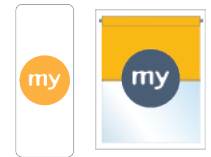


3) To set a **NEW** "my" position, repeat steps 1 and 2.

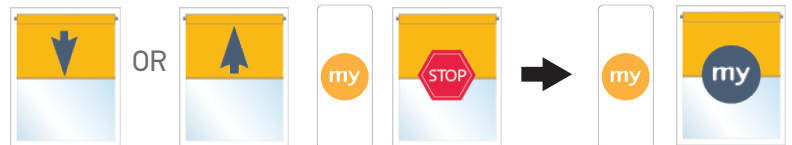
To delete: First send the shade to the current "my" position, then **PRESS & HOLD** the **MY/STOP** button for 5 seconds. The shade will jog to confirm deletion.

USING THE INTERMEDIATE "MY" POSITION

While the shade is stationary, a simple press of the **MY/STOP** button will move the shade to the "my" intermediate position from any shade position.



If the shade is in motion, first stop it by pressing **MY/STOP** and then **MY/STOP** again to send it to the "my" position.



ADJUSTING THE SPEED

LED blinks alternately in green and yellow during the adjustment.

1) Move the shade away from the end limits. **PRESS & HOLD** the **UP, MY/STOP and DOWN** buttons simultaneously, until the shade jogs. The shade will move up and down automatically in ten second cycles.



2) To increase the speed, **PRESS & HOLD** the **UP** button until the shade jogs. Repeat as needed.

Maximum speed is achieved when the shade no longer jogs when the UP button is pressed.

3) To decrease the speed, **PRESS & HOLD** the **DOWN** button until the shade jogs. Repeat as needed.

Minimum speed is achieved when the shade no longer jogs when the DOWN button is pressed.

4) To confirm the new speed, **PRESS & HOLD** the **MY/STOP** button until the shade jogs.

