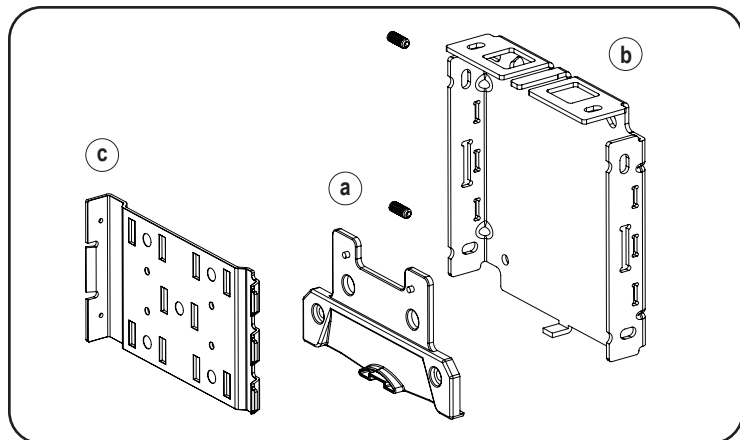


Important: Make sure the mounting surface is level. Brackets must be aligned and level for shade to operate properly. Shim brackets if necessary.

A. SINGLE SHADE

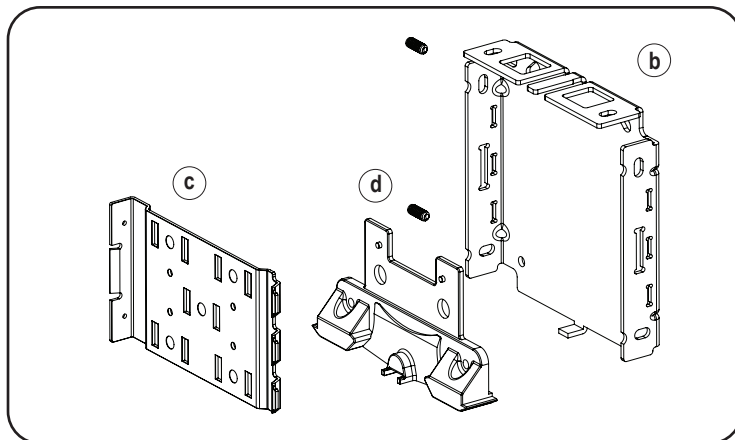
1A. Bracket Plate Assembly

Continuous Loop Control



Pin end assembly

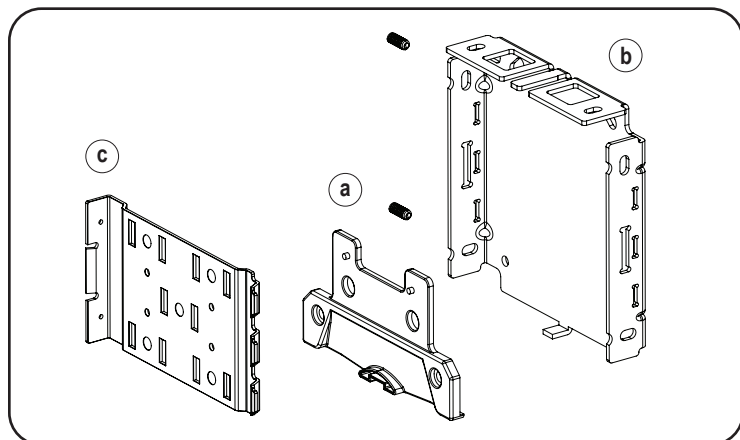
Insert the pin end guide (a) in between the bracket base (b) & bracket plate (c).
 Snap bracket plate (c) into the inside of the bracket base (b) with the pin end guide (a) in between.
 Secure the 3 parts with the two screws provided.
 Note: Once bracket plate is assembled with the bracket base, it will be difficult to take apart.



Control end assembly

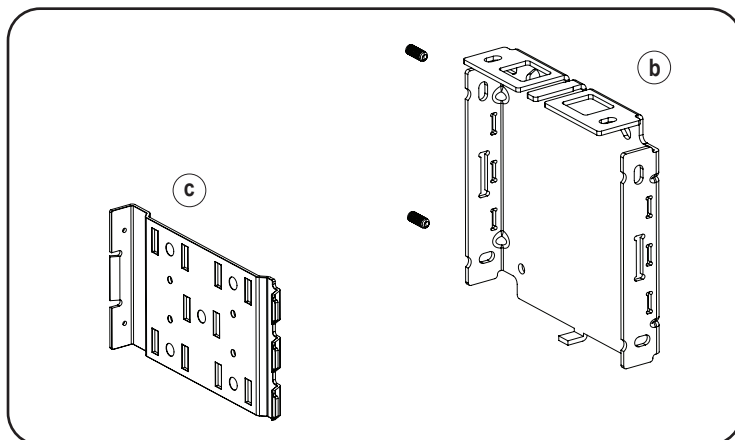
Insert the single chain guide diverter (d) in between the bracket base (b) & bracket plate (c).
 Snap bracket plate (c) into the inside of the bracket base (b) with single chain guide diverter (d) in between.
 Secure the 3 parts with the two screws provided.
 Note: Once bracket plate is assembled with the bracket base, it will be difficult to take apart.

Cordless Lift, DC and Li-ion Motors



Pin end assembly

Insert the pin end guide (a) in between the bracket base (b) & bracket plate (c).
 Snap bracket plate (c) into the inside of the bracket base (b) with the pin end guide (a) in between.
 Secure the 3 parts with the two screws provided.
 Note: Once bracket plate is assembled with the bracket base, it will be difficult to take apart.

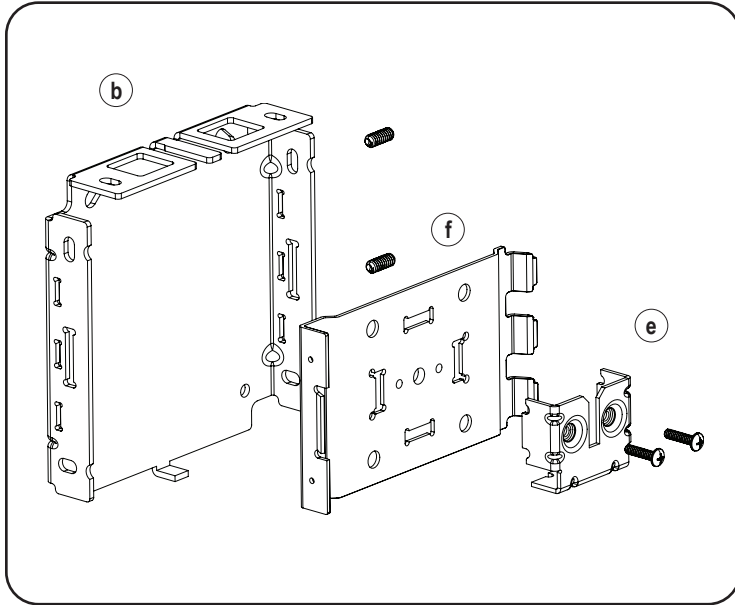


Control end assembly

Snap the bracket plate (c) into the inside of the bracket base (b).
 Secure the 2 parts with the two screws provided.
 Note: Once bracket plate is assembled with the bracket base, it will be difficult to take apart.

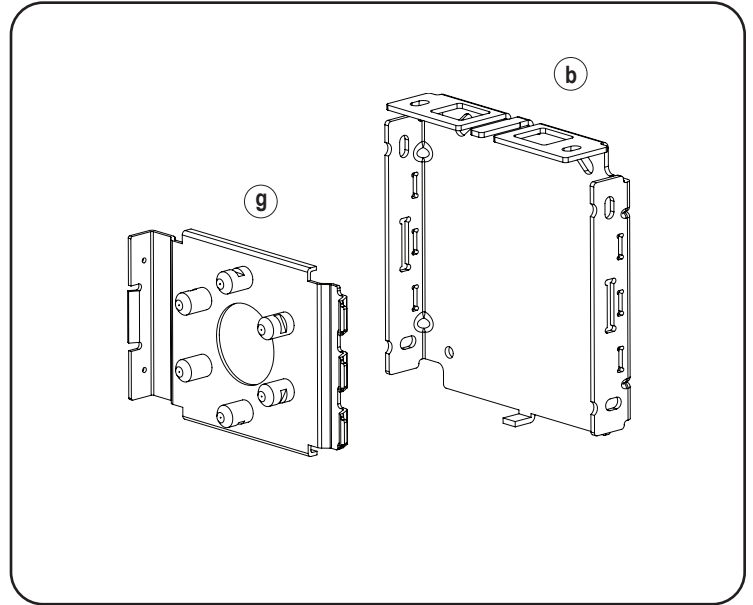
INSTALLATION INSTRUCTIONS

Hardwire Motorization



Pin end assembly

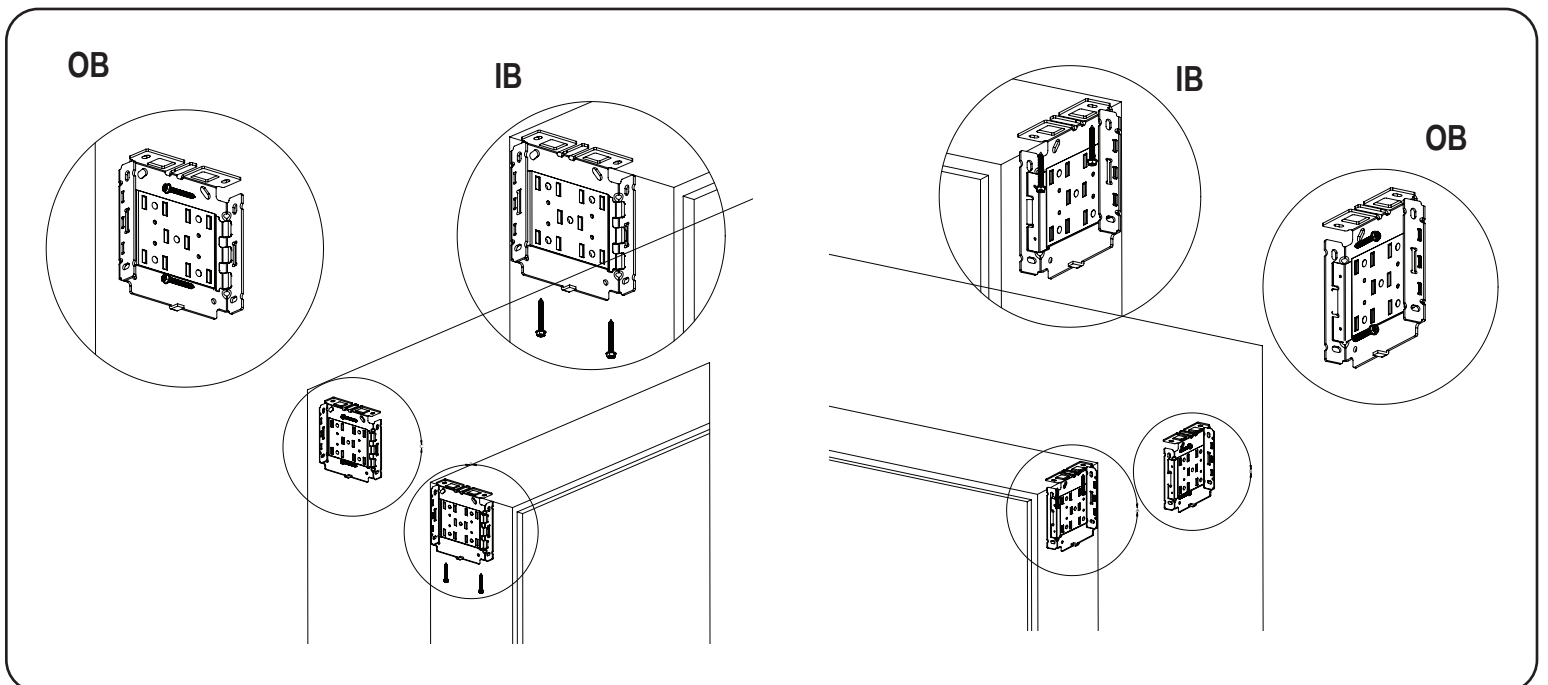
Insert idler plate (f) into the bracket base (b).
Attach the yoke (e) to the idler plate (f) with the washers & screws provided.
Secure the 3 parts with the two screws provided.
Note: Once bracket plate is assembled with the bracket base, it will be difficult to take apart.



Control assembly

Snap the star head plate (g) into the inside of the bracket base (b).
Note: Once bracket plate is assembled with the bracket base, it will be difficult to take apart.

2A. Install the Mounting Brackets

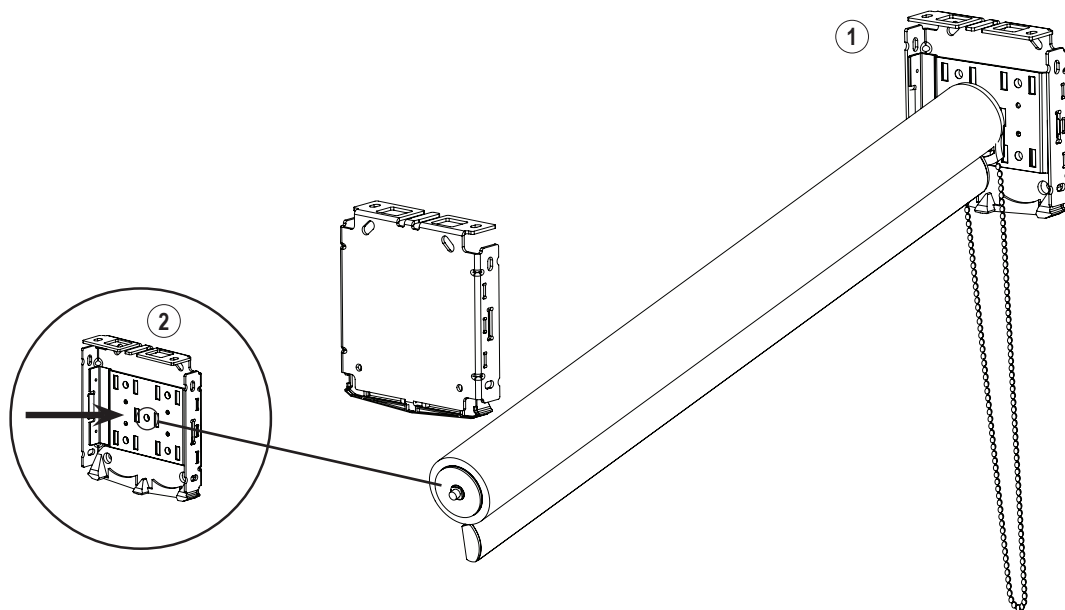


Inside mount (IB): Install the assembled brackets with two screws either through the side or up through the top. Make sure brackets are leveled.
Outside mount (OB): Install the assembled brackets with two screws through the side. Make sure all brackets are leveled.

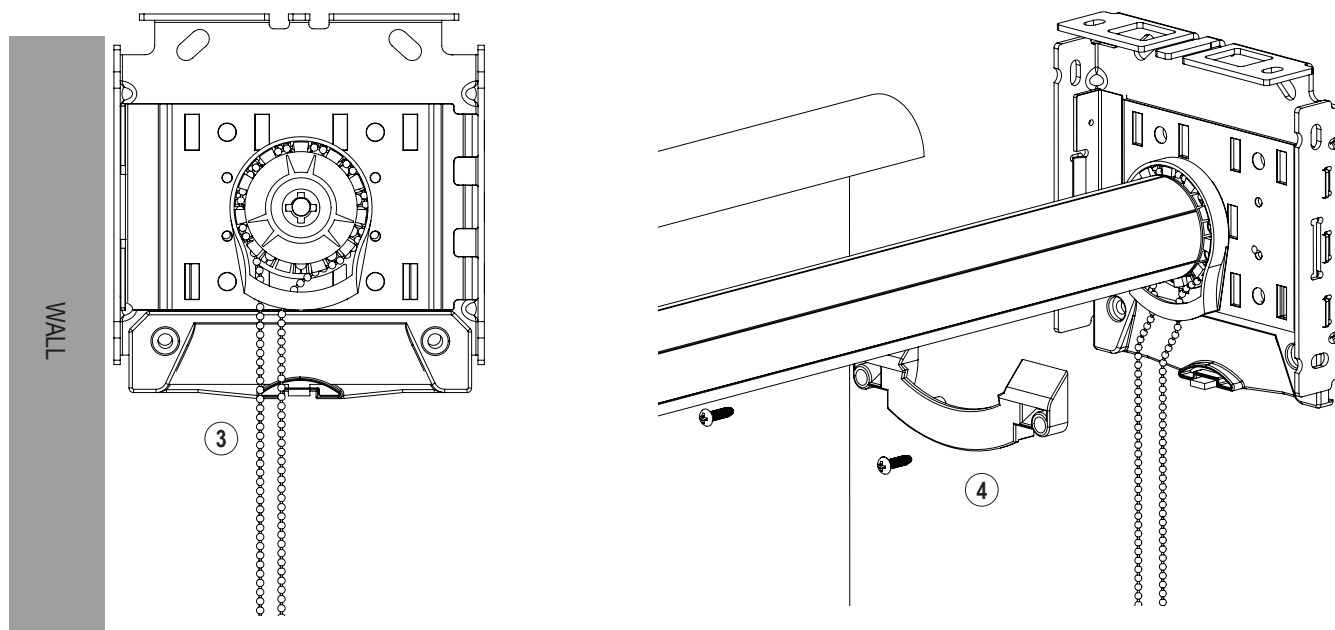
INSTALLATION INSTRUCTIONS

3A. Single Shade Installation

Continuous Loop Control



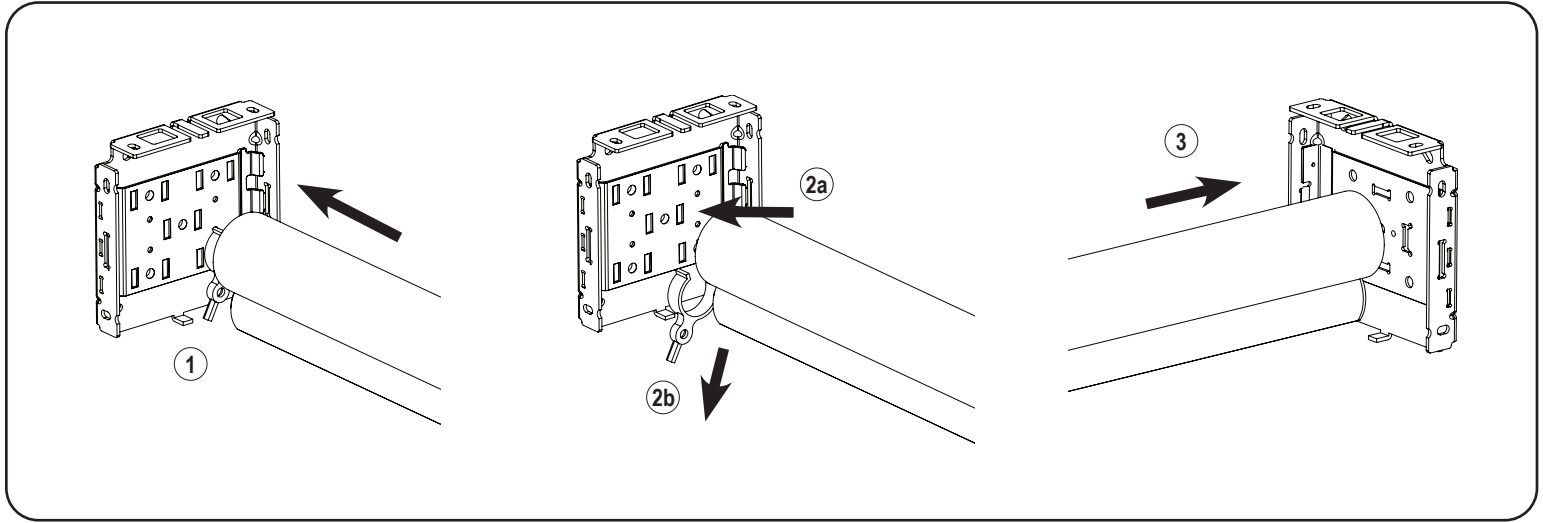
1. Attach the roller shade, control side first, by inserting the 2 hooks into the middle slots on the bracket plate. Push the hooks through the slots and pull down.
2. Push the pin end (idler) into the middle slots of the assemble bracket plate.



3. Position the chain to the back tab of the guide (back tab is the tab closest to the wall).
4. Attach the single chain guide cover using provided screws.

INSTALLATION INSTRUCTIONS

Cordless Lift

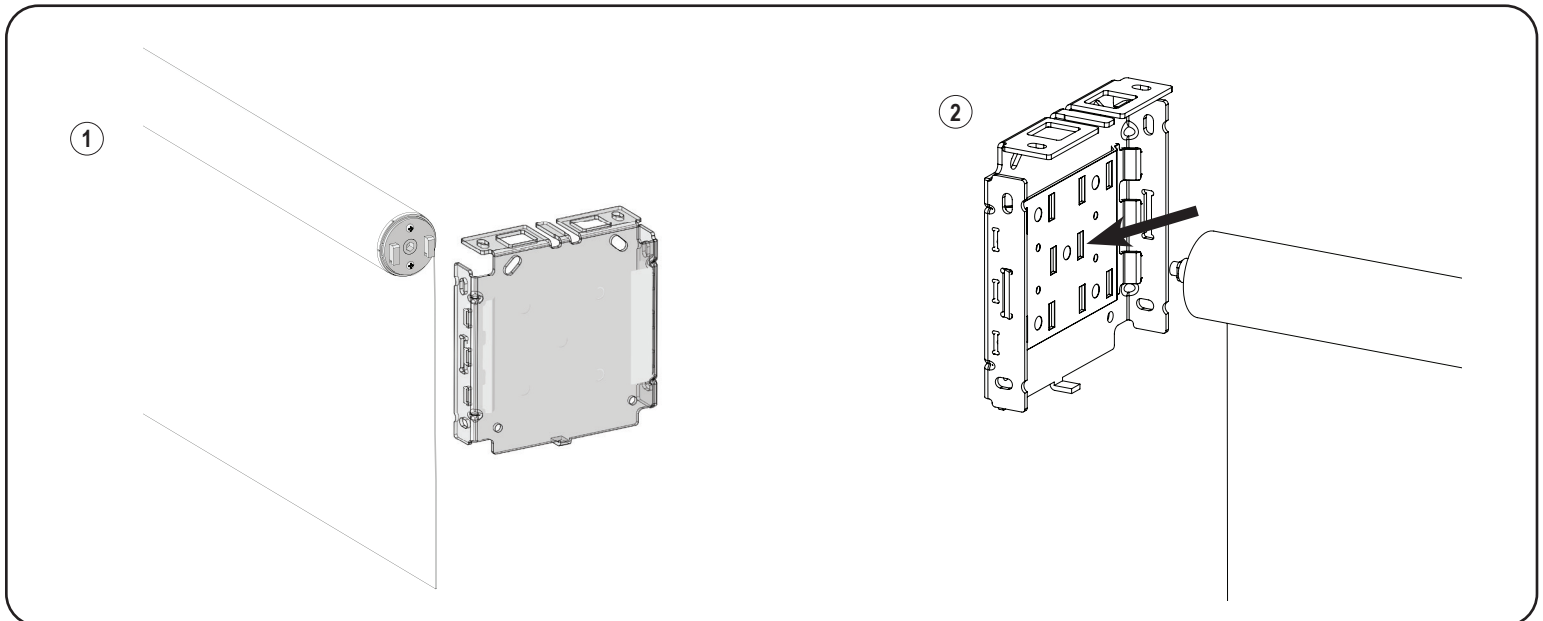


Important: Do not remove the red lock until shade is securely assembled onto the brackets.

1. With the red lock still attached to the shade, angle the shade to align the hooks on the motor head to the middle slots of the bracket. **Keep the red lock installed onto the shade.**
- 2a. Push the hooks into the middle slots on the bracket to secure the shade.
- 2b. Once the hooks are inserted and motor end is secured into the bracket, pull the red lock out.
3. With the motor side of the shade locked in, insert the spring-loaded pin (on the other end of the shade) into the middle round hole on the assembled pin end bracket plate.

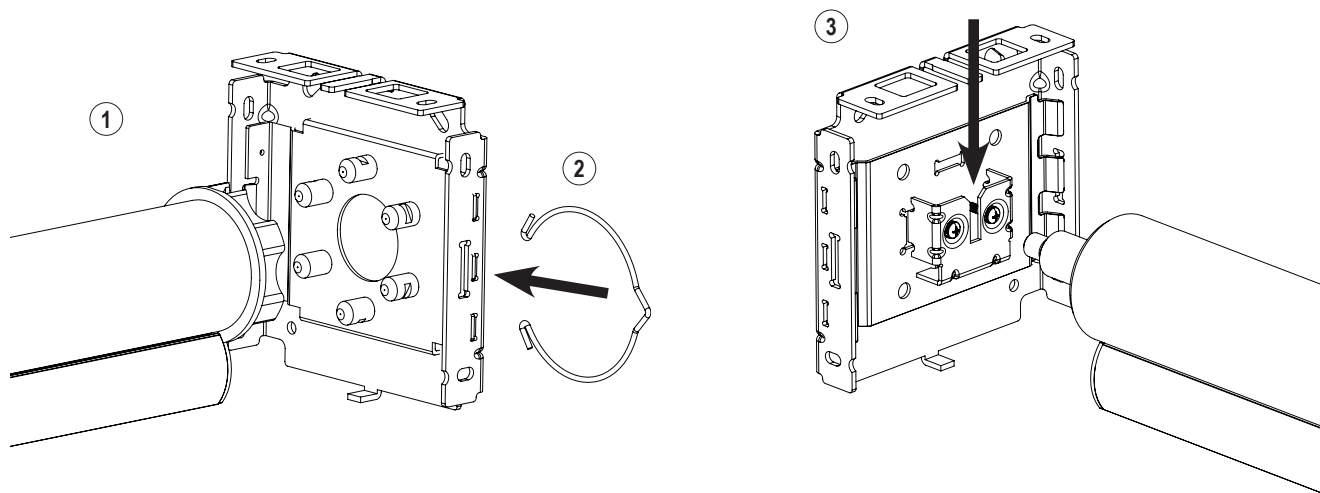
Note: If for any reason the installation brackets need to be adjusted or the shade needs to be removed, raise the shade and insert the red lock pin to its original position.

Motorization DC and Li-ion Motor



1. Attach the roller shade, control side first, by inserting the 2 hooks into the middle slots on the assembled bracket plate. Push the hooks through the slots and pull down.
2. Insert pin end (idler) into the middle slots of the assembled bracket plate.

Hardwire Motor

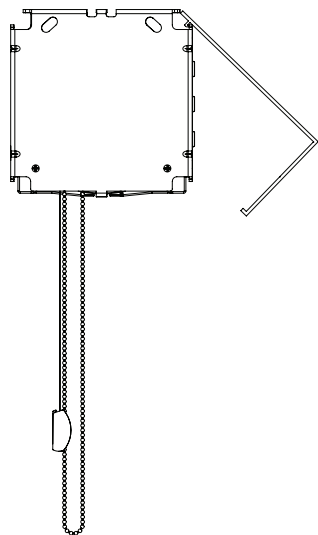


1. Install the control side first by inserting the star shaped motor head into the assembled star head bracket plate.
2. Slide the spring ring to secure the shade as shown on the image above
3. Install the pin end (idler) side by inserting the retractable pin into the slot on the yoke (the slot is the opening between the 2 circular shapes on the yoke). Slide the pin down the slot to secure.

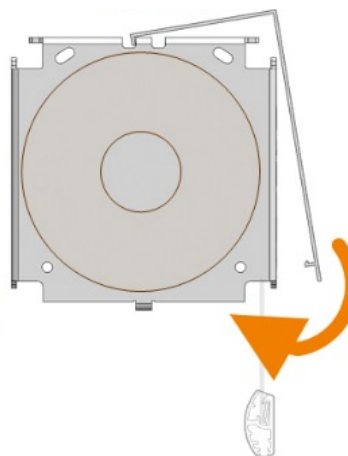
INSTALLATION INSTRUCTIONS

4A. Attach the Fascia Profile

A) Standard Roll



B) Reversed Roll

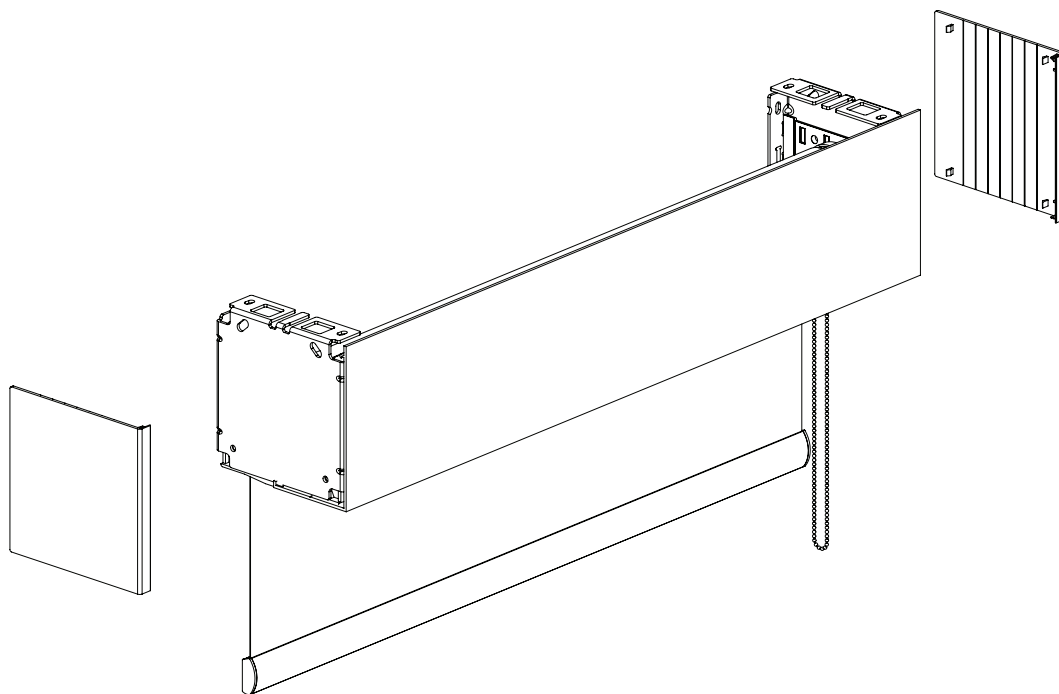


After the shade is installed, attached the upper lip of the fascia profile first.

A) For standard roll shade, the wider lip is on the bottom.

B) For reverse roll shade, the wider lip on the top. See images above.

5A. Attach the Bracket Covers



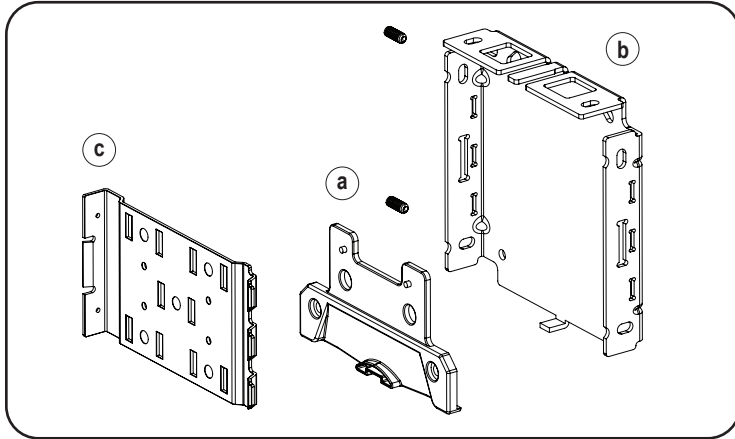
Attach clip-on bracket covers.

INSTALLATION INSTRUCTIONS

B. DUAL MOUNT SHADE

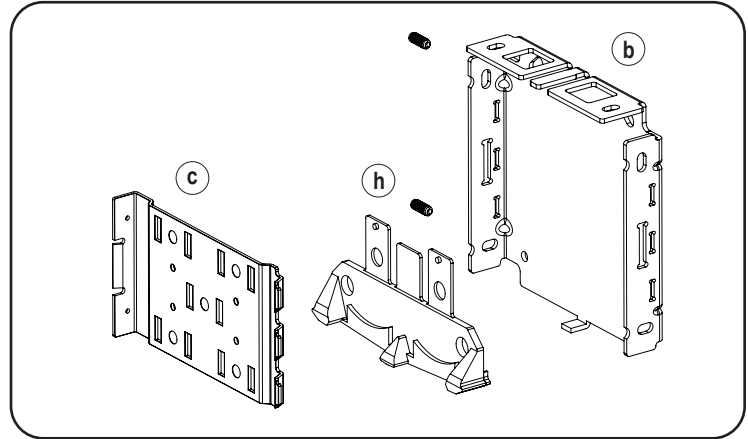
1B. Bracket Plate Assembly – Dual Mount Shade

Continuous Loop Control – Different from Single Shade



Pin end assembly

Insert the pin end guide (a) in between the bracket base (b) & bracket plate (c).
Snap bracket plate (c) into the inside of the bracket base (b) with the pin end guide (a) in between.
Secure the 3 parts with the two screws provided.
Note: Once bracket plate is assembled with the bracket base, it will be difficult to take apart.



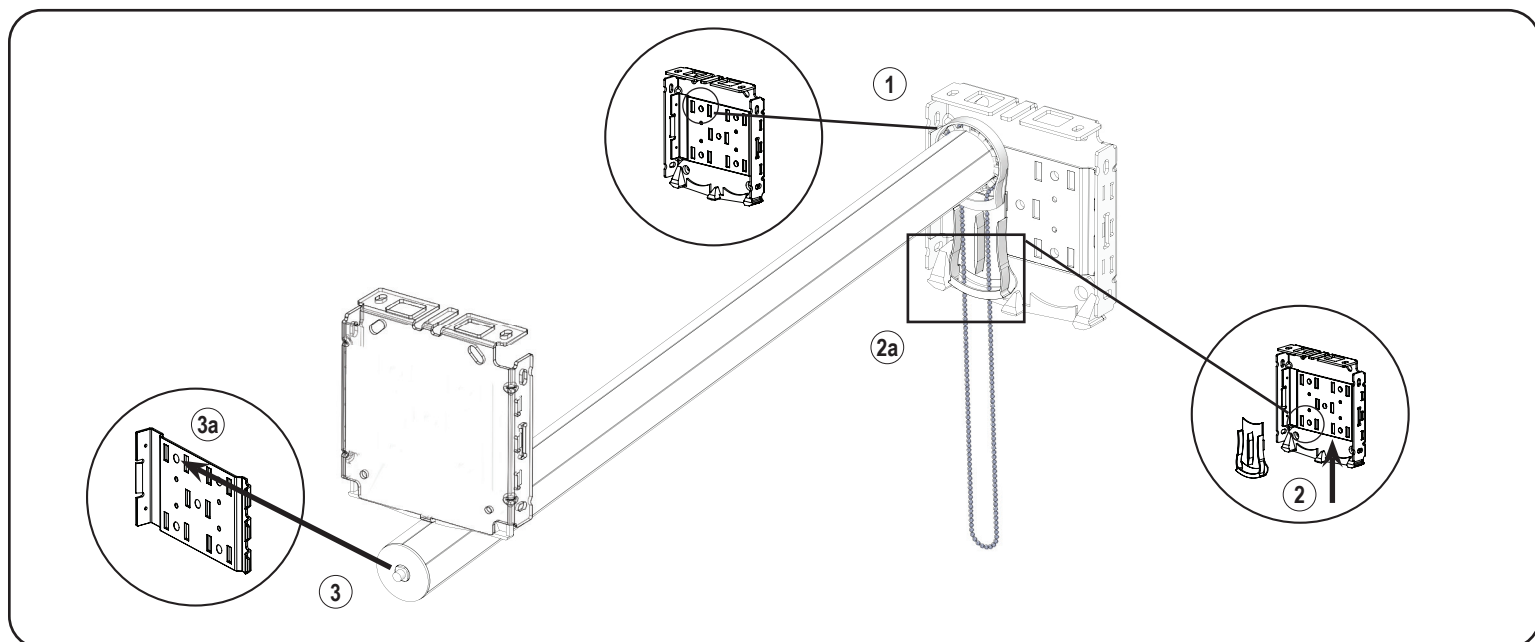
Control end assembly

Insert the **dual** chain guide diverter (H) in between the bracket base (b) & bracket plate (c).
Snap bracket plate (c) into the inside of the bracket base (b) with dual chain guide diverter (H) in between.
Secure the 3 parts with the two screws provided.
Note: Once bracket plate is assembled with the bracket base, it will be difficult to take apart.

Cordless Lift, DC, & Li-Ion Motors – Same bracket assembly as Single Shade

2B. Install the Mounting Brackets – Same as Single Shade

3B. Dual Mount Shade Installation



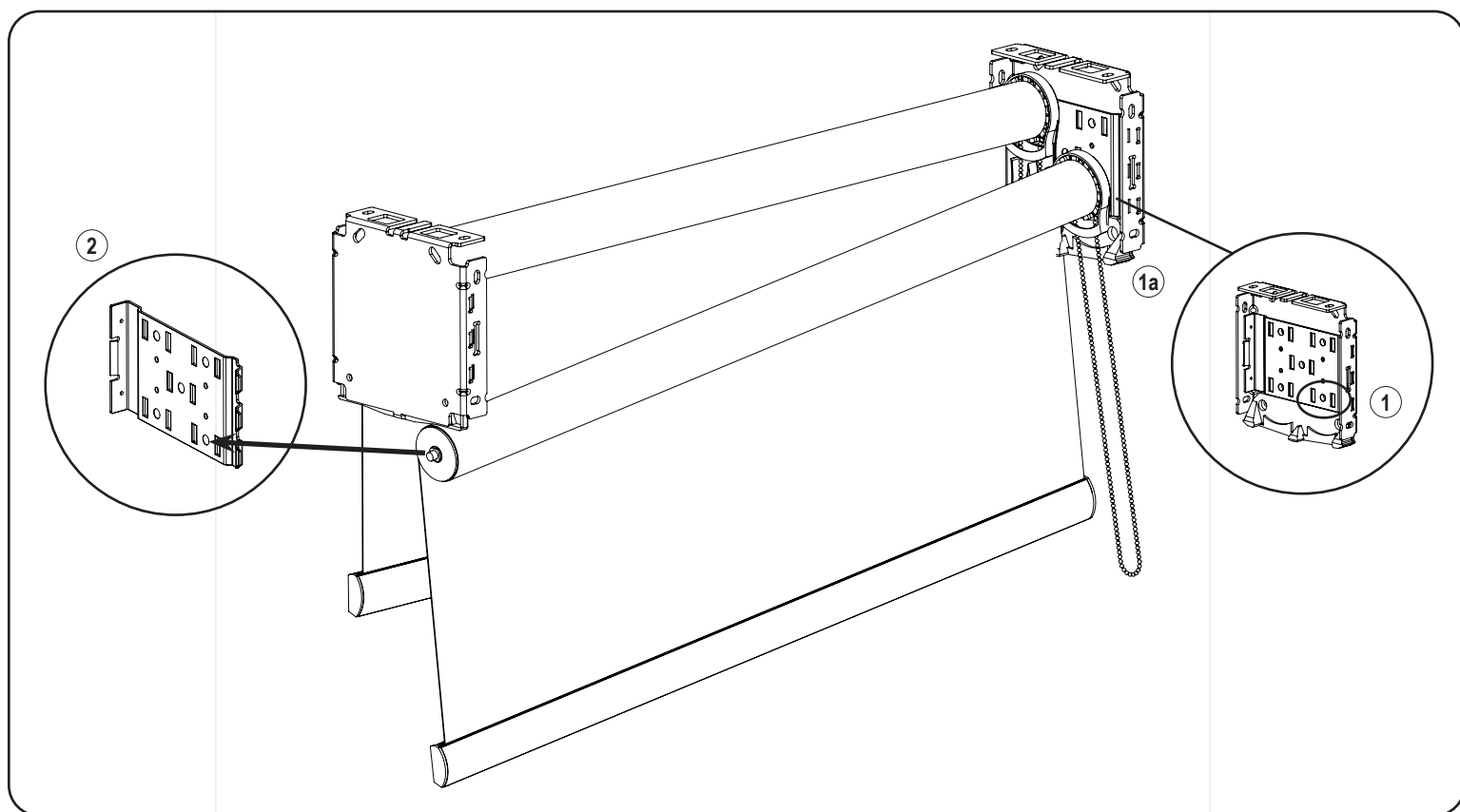
Install the top/back shade first. ****The top/back shade is the shade with the dual chain guide attached to the chain.**

1. Attach the roller shade, control side first, by inserting the 2 hooks into the top/back slots on the bracket plate. Push the hooks through the slots and pull down.

****For Continuous Loop Control, slide the dual chain guide that is attached to the chain up, inserting it to the bottom of the clutch. See image #2 above. The chain for the top/back shade is positioned to the back tab of the chain guide (image #2a).**

3. Snap pin end (idler) into the middle hole between the top/back slots on the assembled bracket plate. See image #3a above.

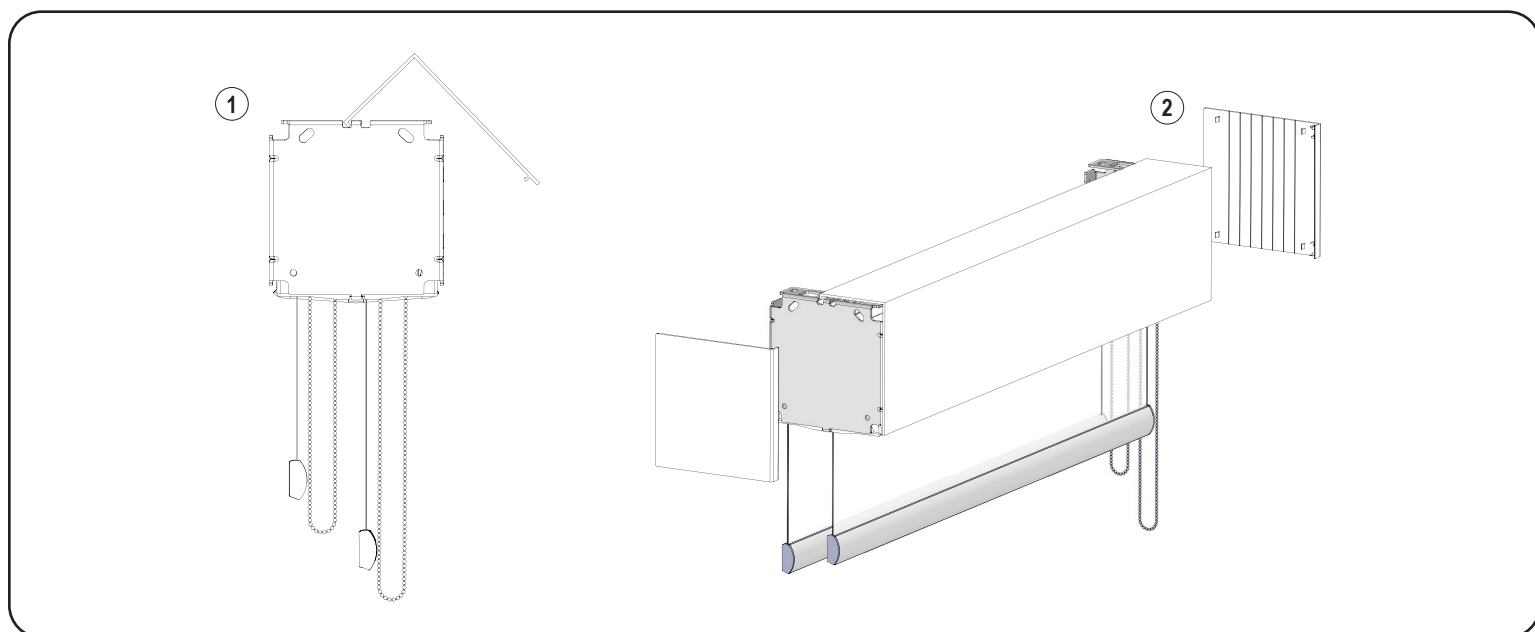
INSTALLATION INSTRUCTIONS



1. Install the second shade (shade without the dual chain guide attached), control side first. Insert the 2 hooks into the bottom/front slots on the bracket plate. Push the hooks through the slots and pull down to fully engage the shade into the bracket.

****For Continuous Loop Control, the chain of the bottom/front shade should be positioned in the front tab of the chain guide (image 1a).**

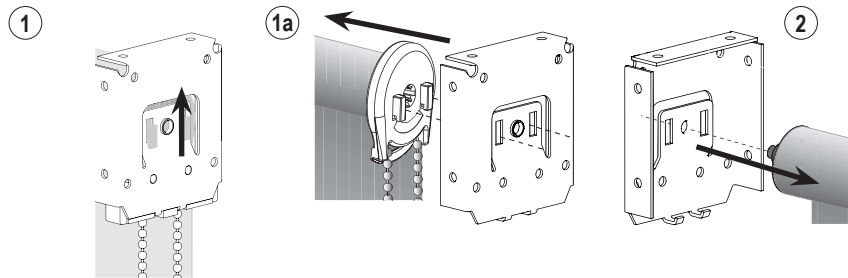
2. Snap pin end (idler) into the middle hole between the front/bottom slots on the assembled bracket plate. See image #2 above.



1. Attach fascia profile with the wider lip on the top. See images above. The wider lip is ALWAYS on the top for Dual Mount Shade.
2. Snap bracket covers on.

HELPFUL TIPS

Shade Removal (Only if Necessary) for Continuous Loop Control, DC & Li-Ion operation

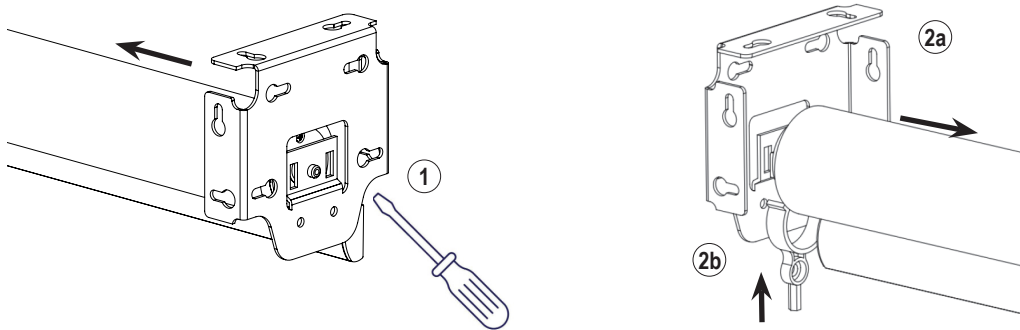


Roll the shade all the way up prior to removal.

Remove the fascia profile and bracket covers.

1. Gently lift the control side until the hooks touch the top part of the assembled plate and (1a) pull hooks out of the bracket slots.
2. Pull the hooks on the pin end out of the bracket slots to remove the shade completely.

Shade Removal for Cordless Lift – Only if Necessary



Prepare the shade removal with a screw driver or any pointed tool along with the red lock.

1. Use the screw driver or pointed tool to push the pin end to disengage from the pin end assembled bracket.
- 2a. On the spring side, with the hooks attached to the bracket, slowly pull the shade toward you only until there's enough room to insert the red lock back onto the shade (same lock location of how the shade arrived). See (2b) above. Do not release the hooks until the red lock is engaged.
3. The shade can be removed from the bracket only when the shade spring is locked with the red lock.

INSTALLATION INSTRUCTIONS

Tension Adjustment for Cordless Lift

Inside Mount: Remove the shade from the installation bracket before adjusting the tension. See removal tips for Cordless Lift above.

Outside Mount: Do not need to remove the shade from the installation bracket. Remove the bracket cover on the spring head side (left side for standard roll and right side for reverse roll).

1. Use hex key or 5mm Allen wrench to turn the spring head (left side for standard roll and right side for reverse roll)**:
 - Turn clockwise to add/increase tension
 - Turn counterclockwise to decrease/reduce tension.

** Red lock that comes with the shade can also be used in lieu of the hex key/Allen wrench.
2. Reinstall the shade (or bracket cover if OB) after tension adjustment is complete.



1049307