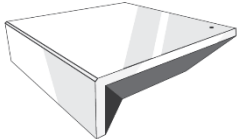


# QUICK START GUIDE

## Smart Home Collection

### Crestron

### INTEGRATION SUPPORT



#### SMART HOME COLLECTION HUB OVERVIEW

Take your Smart Home Collection Hub experience to the next level by integrating motorized shades into Crestron Systems. The Smart Home Collection Hub is a rich integration that supports discrete shade control and features a two-way communication system offering real time shade position and battery level status. The Automate Pulse Hub 2 supports Ethernet Cable (CAT 5) and Wireless Communication 2.4GHz) for home automate integration using the RJ45 port conveniently located on the back of the hub. Each hub can support integration of up to 30 shades.

#### GETTING STARTED:

In order to integrate your motorized window treatments with Crestron, you will need to have:

- Downloaded the free Smart Home Collection Hub via the Apple App Store (available under iPhone /iPad apps) or the Google Play Store.
- Purchased one or more Smart Home Collection Hub depending on size of the space and additional repeaters if is required.
- Integrated your motorized window treatments onto Smart Home Collection app .

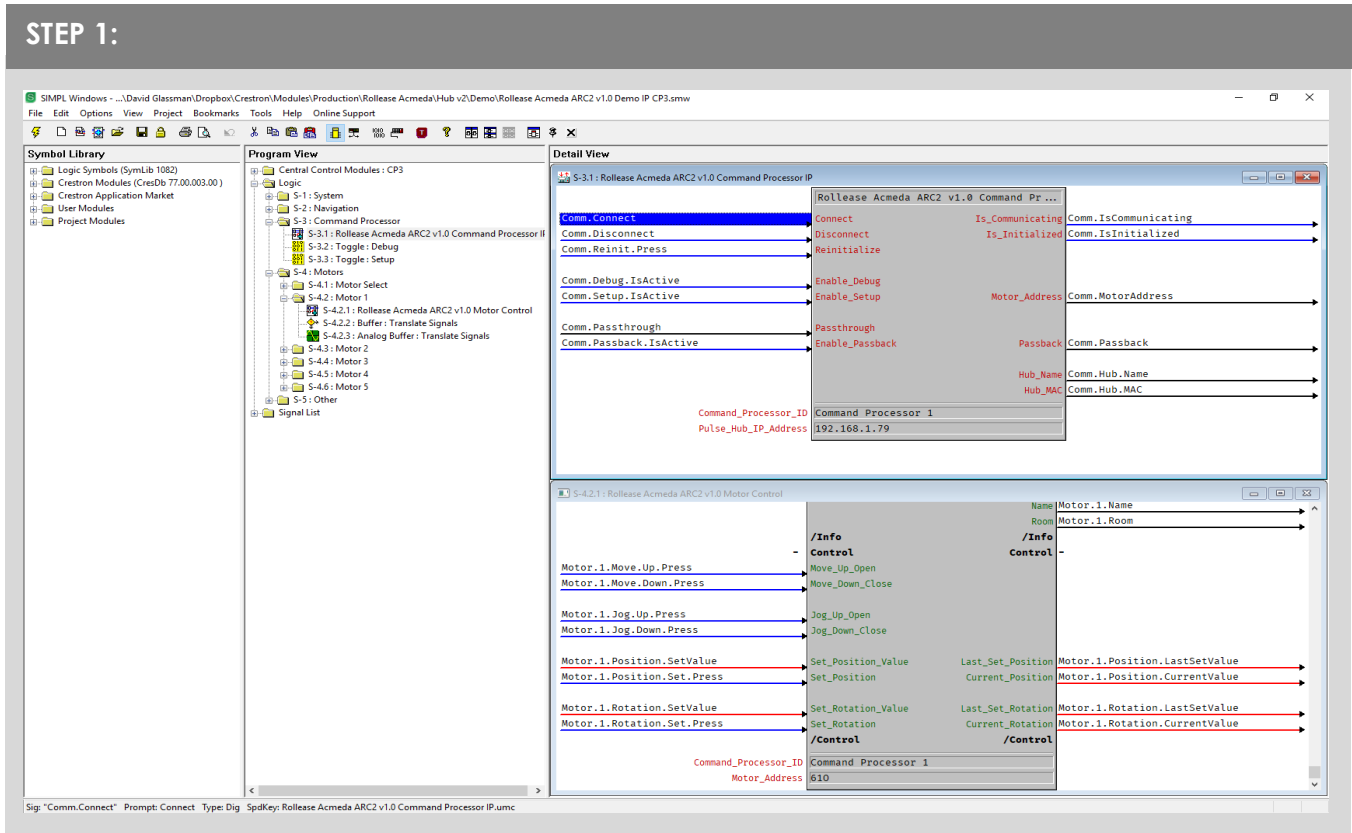
#### INSTRUCTIONS INCLUDED:

- Set up instructions for both the Smart Home Collection app & Smart Home Collection Hub.
- Crestron Driver Installation Instructions
- Crestron Driver Guide
- Integration Diagram
- Integration FAQ's

## CRESTRON HUB DRIVER INSTALLATION SECTION:


1. Find Rollease Acmeda ARC2 module in the Crestron Application Marketplace.
2. Unzip folder and open the Rollease Acmeda ARC2 v1.0 Demo IP CP3.smw file in SIMPL Windows.

### STEP 1:



3. Locate the Rollease Acmeda ARC2 v1.0 Command Processor IP symbol in the SIMPL Windows program and replace the current IP address on the Pulse\_Hub\_IP\_Address parameter with the actual IP address of your hub.
4. Comment out the entire "Motors" subfolder in the example program.
5. Compile and load the example program to your Crestron processor.
6. Open the Rollease Acmeda ARC2 v1.0 Demo XPanel.c3p file to open the XPanel simulator on your computer (you may need to install Adobe Air first with the included CrestronXPanel installer files).
7. Once the XPanel opens, click Options ☐ Host Settings in the top menu and enter the IP address of your Crestron processor in the Hostname/IP Address field and hit connect. This will connect your XPanel to your processor and allow for using the XPanel as a simulator in place of a physical touchpanel.
8. The module will automatically attempt to communicate with the hub when the program loads. Once communication is established with the hub, the Communicating indicator on the top right of the XPanel will illuminate. If it does, proceed to the next steps. If it does not, verify the IP address you entered in SIMPL Windows is correct and that the hub and Crestron processor are on the same network.
9. On the Command Processor tab in the XPanel, click the "Setup" button so it illuminates blue.
10. Using a remote or the Rollease Acmeda app, move each shade to initiate a response (in order to identify each).
11. The address of the last motor that moved/responded will automatically populate in the Motor Address field on the XPanel. Move each motor to identify each address.

## STEP 2:

**ROLLEASE  
ACMEDA**

HUB NAMEMy House  
HUB MAC ADDRESS24:0a:c4:27:73:34

COMMUNICATING  
INITIALIZED


# COMMAND PROCESSOR

INITIALIZEDEBUGSETUP

MOTOR ADDRESS


91D

COMMAND PROCESSORMOTOR CONTROL




- Once you have the address for all your desired motors, uncomment the entire "Motors" subfolder in the example program and enter in the appropriate address in the Motor\_Address parameter for each instance of the Rollease Acmeda ARC2 v1.0 Motor Control module in your program (the example program has 5 motors. You may have more or less in your installation). Once the addresses have been entered, recompile and reload your program.
- Refer to the help files included in the module package for further details and information regarding the capabilities of the module(s).

## STEP 3:

**CRESTRON**

Certified Module

Partner: Rollease Acmeda  
Model: ARC2 Hub  
Device Type: Shade/Motor Control



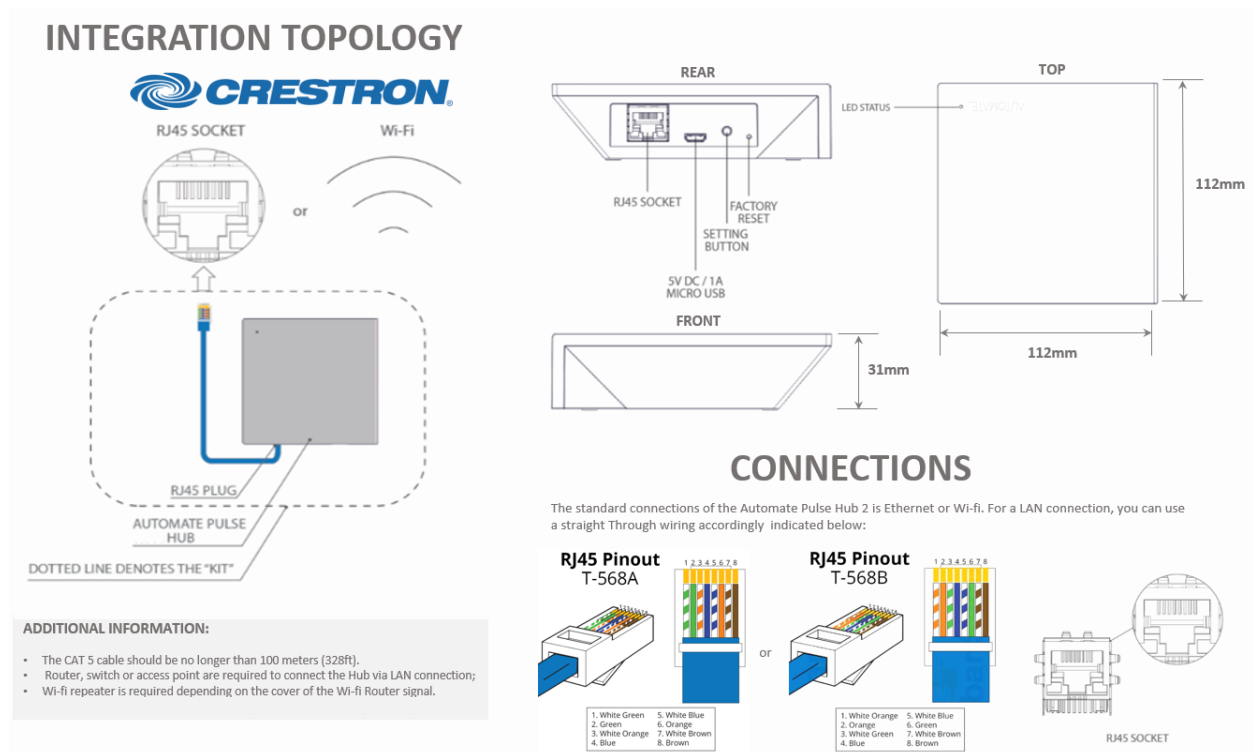
**GENERAL INFORMATION**

SIMPLWINDOWS NAME:	Rollease Acmeda ARC2 v1.0 Motor Control
CATEGORY:	Shades/Drapes
VERSION:	1.0
SUMMARY:	This module controls all the Rollease Acmeda ARC2 motor control points.
GENERAL NOTES:	<p>This is a standalone "component" module allowing for controlling a single motor.</p> <p>This module requires an instance of the primary "Rollease Acmeda ARC2 v1.0 Command Processor IP" communication module be included in the program. Control for this "component" module will be bound to and flow through the primary Comm module.</p>

### Common Mistakes:

- Entering the wrong IP address in the "IP Address" configuration line.  
If you're failing to discover devices double check this!

## CRESTRON SMART HOME CONTROL SYSTEM CONNECTION:



## FREQUENTLY ASKED QUESTIONS:

**Q. No Hub detected.**

A. Make sure that your Smart Home Collection Hub is connected to the correct network and get an IP Address available and still communicating with the network using the Smart Home Collection App.

**Q. Shade limits are not set properly.**

A. Calibrate shade limits with your Rollease Acmeda remote before setting the appropriate open and close time within CRESTRON SYSTEM.

**Q. Shade is not moving at all.**

A. Make sure the selected Smart Home Collection Hub is the correct Smart Home Collection Hub for the shade to be controlled. Confirm the correct bindings are set in the CRESTON System connections tab between the Smart Home Collection Hub and Shade drivers.

**Q. I have multiple Hub's, what do I do?**

A. Load two Smart Home Collection Hub drivers. After selecting "Retrieve Hubs" located in the driver actions tab, you will see different Smart Home Collection Hub - select the desired one.

**Q. I don't see any shade bindings in the Hub driver?**

A. Select "Retrieve Shades" located in the driver actions tab.

**Q. How do I scan for available Hub's?**

A. Once the Smart Home Collection Hub is properly connected via the Ethernet cable or Wireless network, navigate to the Smart Home Collection Hub Properties page within Composer. Select "Retrieve Hubs" located in the driver actions tab.

**Q. We get unexpected responses from the CRESTRON system, or "?" symbols**

A. Ensure that all connections using the ethernet port or Wi-Fi are working properly. The missed connection has been known to yield unwanted or unexpected results.

**SUPPORT RESOURCES:**

For further assistance, contact your retailer, visit our website at [www.budgetblinds.com](http://www.budgetblinds.com).