



SMART HOME  
COLLECTION  
by BUDGET BLINDS®

# QUICK START GUIDE

## SHC™ Savant

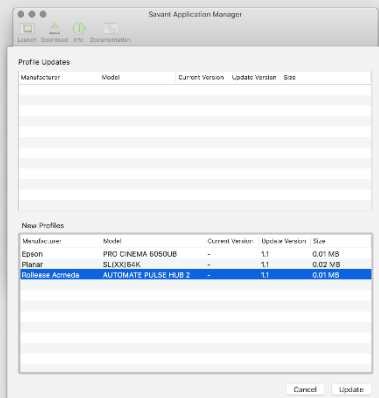
### INTEGRATOR SUPPORT



#### SMART HOME COLLECTION PULSE PRO OVERVIEW

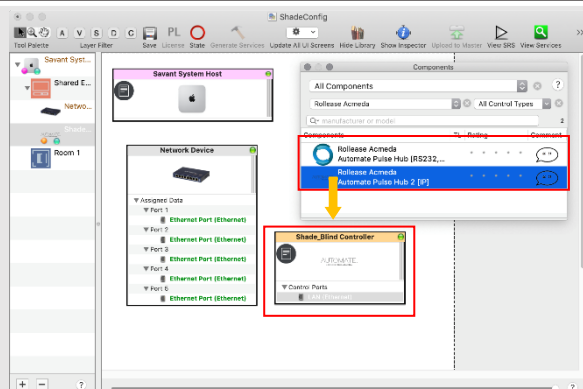
Elevate your SHC experience by seamlessly integrating SHC motorized shades into Savant's industry-leading, Smart Home control systems. The SHC Pulse Pro offers a powerful integration with discrete shade control and two-way communication, providing real-time updates on shade position and battery levels. Featuring both Ethernet (CAT 5) and 2.4GHz wireless connectivity, the Pulse Pro ensures smooth home automation integration through an easy-to-access RJ45 port located on the back of the hub. Each hub supports up to 30 shades, making it a versatile solution for any home automation setup.

#### STEP 1:



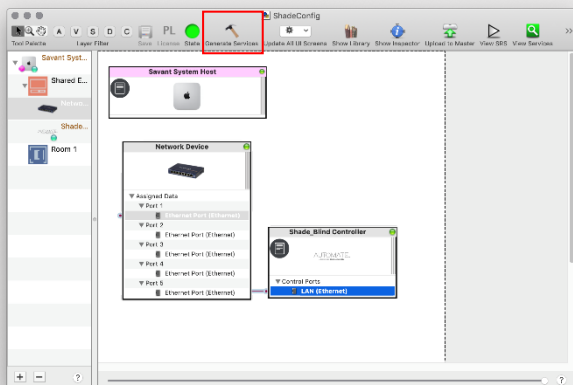
Open the Savant Application Manager and update your profile library. If you do not already have the SHC PULSE PRO HUB profile in your library, it will appear in the "New Profiles" list.

#### STEP 2:



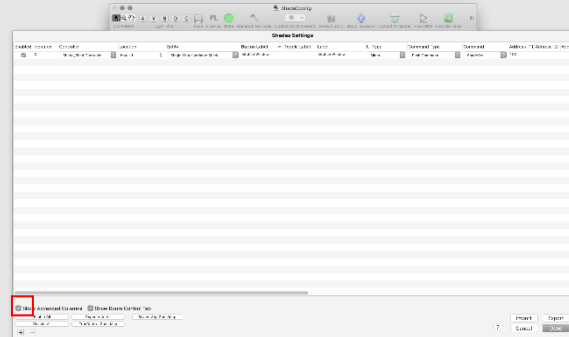
Open your current Blueprint configuration and locate the SHC profile within the Library, then drag the item into your Blueprint canvas.

#### STEP 3:



Make a connection between the "LAN (Ethernet)" port on the Shade Controller profile and the "Ethernet Port (Ethernet)" port on a Network Switch profile. Then click the "Generate Services" button.

#### STEP 4:

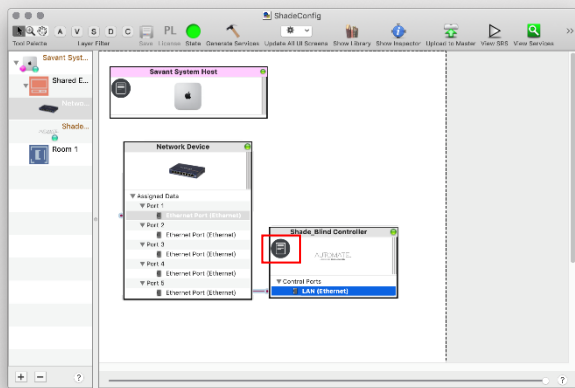


Navigate to Tools > Settings > Shades... in the menu to locate the "Shade Settings" data table. Click the + button, in the bottom-left of the screen, to add a new shade. Set values for the following:  
**Location** (EX: Room 1).  
**Entity** (EX: "Shade" for Up-Down-Stop buttons, or "Shade Motor Variable Shade" for a shade slider).  
**Label** (EX: "Kitchen Window").  
**Address** [1] [EX: 19X]. This must be in the form of a 3-character string. The addresses are the same as those displayed on your Automate Shades App.



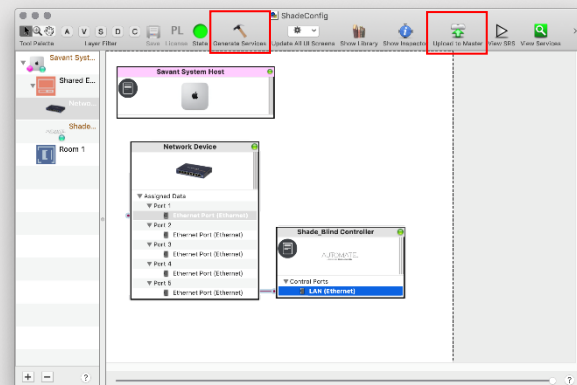
SMART HOME  
COLLECTION  
by BUDGET BLINDS®

## STEP 5:



The "Notes" section of the profile provides additional details about setup or use. This section may be updated over time

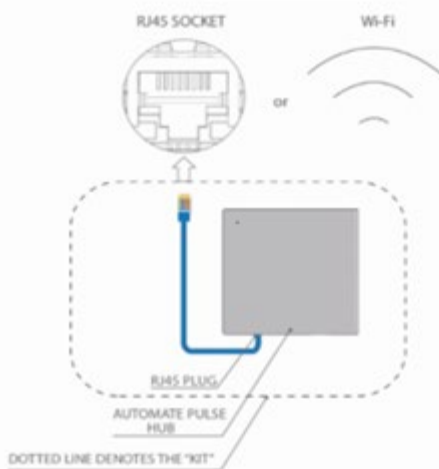
## STEP 6:



Click the "Generate Services" button again, then "Upload to Master" to push the configuration to the Savant Host.

## SAVANT CONTROL SYSTEM CONNETION:

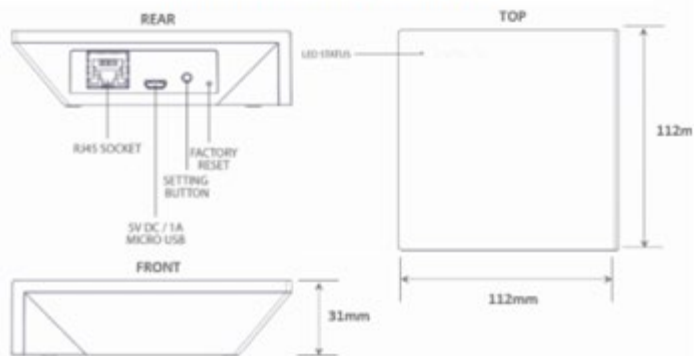
### INTEGRATION TOPOLOGY SAVANT



#### ADDITIONAL INFORMATION:

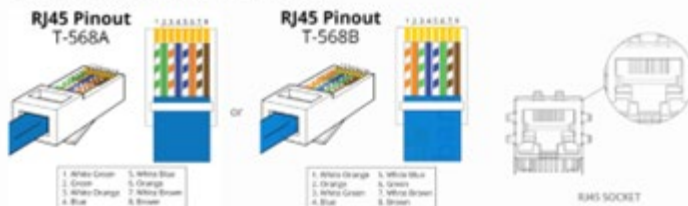
- The CAT 5 cable should be no longer than 100 meters (328ft).
- Router, switch or access point are required to connect the Hub via LAN connection.
- Wi-fi repeater is required depending on the cover of the Wi-fi Router signal.
- The AUTOMATE PULSE HUB 2 works only with Wi-fi in 2.4Ghz (not 5Ghz)

### SHC PULSE PRO HUB



### CONNECTIONS

The standard connections of the Automate Pulse Hub 2 is Ethernet or Wi-fi. For a LAN connection, you can use a straight Through wiring accordingly indicated below:



## FREQUENTLY ASKED QUESTIONS:

**Q. No SHC Pulse Pro detected.**

A. Make sure that your SHC Pulse Pro is assigned to the correct network and get an IP Address available and still communicating with the network using the SHC App.

**Q. Shade limits are not set properly.**

A. Calibrate shade limits with your SHC remote before setting the appropriate open and close time within SAVANT SYSTEM.

**Q. Shade is not moving at all.**

A. Make sure the selected Pulse Pro Hub is the correct Pulse Pro Hub for the shade to be controlled. Confirm the correct bindings are set in the SAVANT System connections tab between the Pulse Pro Hub and Shade drivers.

**Q. I have multiple Pulse Pros, what do I do?**

A. Load two Pulse Pro drivers. After selecting "Retrieve Hubs" located in the driver actions tab, you will see different Pulse Hubs - select the desired one.

**Q. I don't see any shade bindings in the Pulse Pro driver?**

A. Select "Retrieve Shades" located in the driver actions tab.

**Q. How do I scan for available Pulse Pro Hubs?**

A. Once the Pulse Pro Hub is properly connected via the Ethernet cable or Wireless network, navigate to the Pulse Hub Properties page within Composer. Select "Retrieve Hubs" located in the driver actions tab.

**Q. We get unexpected responses from the SAVANT System, or "?" symbols**

A. Ensure that all connections using the ethernet port or Wi-Fi are working properly. The missed connection has been known to yield unwanted or unexpected results.

### SUPPORT RESOURCES:

For further assistance, contact your retailer, visit our website at [www.budgetblinds.com](http://www.budgetblinds.com)